

CAPABILITY STATEMENT

Education

TAFE GIPPSLAND



**We acknowledge the
Traditional Custodians
of the land and pay
our respects to their
Elders past and
present.**

CONTENTS

04

People who build

06

Expertise and reach

Safer by Choice

08

**Our education
credentials**

11

Our education clients

12

Our work

39

**Other education
projects**

42

Our people

National team
State Managers

50

Financial strength

52

**Accreditations,
memberships and
affiliations**

A photograph of a modern building facade with dark grey panels and copper-framed balconies. A large blue abstract shape is overlaid on the bottom half of the image, containing the main text.

Chisholm Redevelopment Stage 1 Frankston, VIC

PEOPLE WHO BUILD

Since our beginnings in 1972, ADCO has been steered by family values, trust and honesty. Everything we do is underpinned by our core values of responsibility, dynamism and teamwork.



WHO WE ARE

We are people who build. It's been that way for more than half a century and today we are one of Australia's largest construction businesses. Proudly, we continue to be family owned.

Our story

A force in Australian construction – guided by family values, trust and putting people first.

The ADCO story began back in 1972. In the years since then, we've grown to be a multi-billion-dollar construction business guided by an unwavering commitment to quality, our clients, and our people. These foundations have seen us become one of the top private companies in Australia with a blue-chip client list and an award-winning portfolio of almost 4,000 successfully completed buildings from early work packages to \$300+ million projects.

Builder of Choice

ADCO aspires to be the *Builder of Choice* for our clients, our consultants, our trade partners, and our people.

Becoming the *Builder of Choice* doesn't just happen. It takes responsibility, teamwork and a dynamic mindset. It's about delivering on our promises and bringing energy to every stage of every project to achieve shared goals. It means completing projects on time, on budget and to the highest standards possible. We call this the ADCO Way, and it's embedded in our DNA. It's the way *People who Build* go to work.

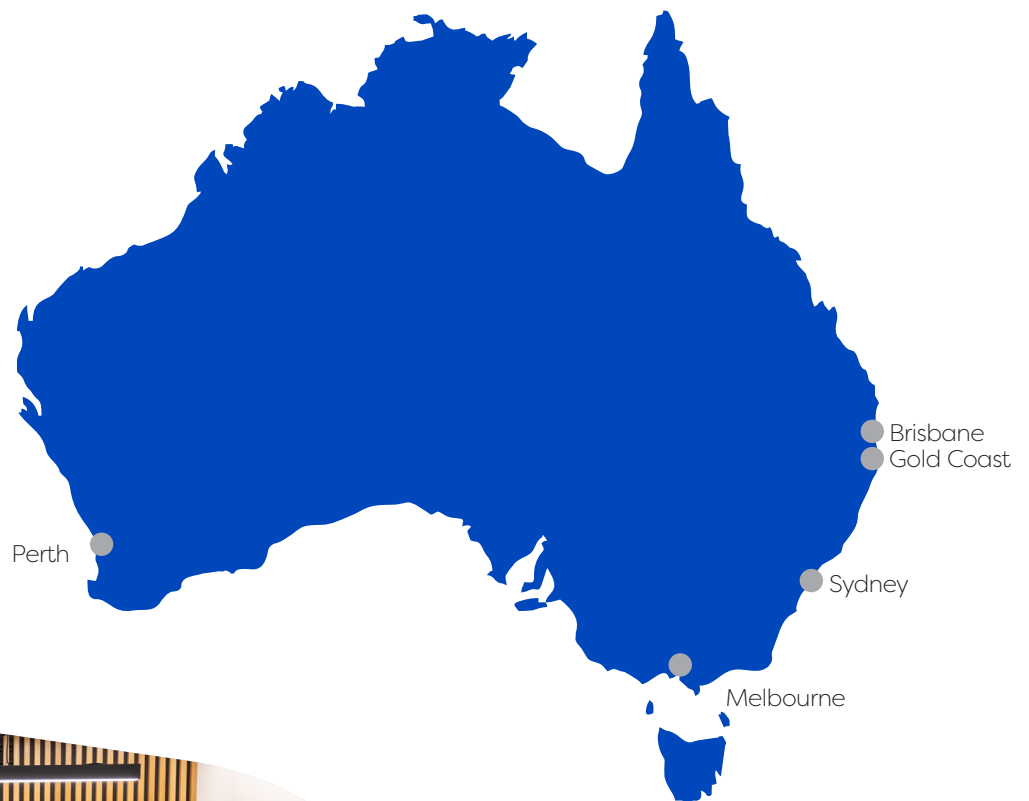


EXPERTISE AND REACH

ADCO has a true national presence with offices throughout Australia.

ADCO is an industry leader with an operational footprint that touches every corner of the Australian market. The strength of our award-winning expertise, capability and people is reflected by exceptionally high levels of repeat business and long-established client relationships across key private and institutional corporations, as well as all levels of government.

Each year, our projects are delivered via early contractor involvement, design, and construct, managing contractor, and traditional construction methods of procurement. Our national presence ensures we can offer holistic and seamlessly delivered projects up to \$300+ million anywhere in Australia.



*Safer*_{by} **CHOICE**

It is our commitment to always ask ‘is there a safer choice?’

Safer by Choice is a philosophy that targets a genuine attitude change towards safety. Running deep within the ADCO business, it goes far beyond statistics and actively promotes personal responsibility and careful decision making.

Underpinned by three commitment pillars of action of Taking Responsibility; Supporting Each Other and Focusing on Positives, Safer by Choice recognises that everyone involved in the design and delivery of a project is a decision maker, and we all have the ability to improve safety, for ourselves and others, by choice.

Establishing a successful safety culture is a long-term commitment from all ADCO employees, guided, fostered and preserved by the leadership team.

ADCO was awarded the ‘Office of the Federal Safety Commissioner’s National Excellence in Workplace Health and Safety’ award for our work on Lakelands Station project at the Master Builder’s Awards in November 2022.



**We are people who
build a smarter
tomorrow.**

Victoria University Sunshine Skills Hub, VIC

**OUR EDUCATION
CREDENTIALS**



200M+

largest project



1ST

6 star Green Star education
project in Australia



375+

education projects
completed



Indooroopilly State High School Hall and Tennis Court, QLD

For over 50 years ADCO has been entrusted to deliver the educational facilities that teach our nation.

Primary and secondary schools in the public, private and independent sectors complement our extensive tertiary portfolio of TAFE's and universities across Australia. Pre-qualified with all State and Territory Governments, ADCO continues to deliver Australia's most advanced learning facilities.



Bray Park State High School New Learning Centre, QLD

“An excellent team, well led. ADCO focuses on solutions and on keeping momentum on the project – resulting in an on time and on budget outcome. Each team member displayed leadership in their respective roles.”

Tony Inglis
LA TROBE UNIVERSITY
EXECUTIVE DIRECTOR INFRASTRUCTURE AND OPERATIONS

OUR EDUCATION CLIENTS

We are proud to have provided educational facilities for a diverse range of clients around Australia. Testament to our success is our significant repeat clientele. Our education clients include:



La Trobe University Sports Stadium, VIC

A photograph of a modern school hallway. On the left, there is a row of white lockers. The floor is covered in a grey and yellow geometric patterned carpet. A curved white wall runs along the right side of the hallway. In the background, there are glass doors and windows. The ceiling is white with a grid of small holes and a long, thin light fixture. A blue abstract shape is in the bottom right corner.

OUR WORK

ADCO's legacy of successfully completed projects is the best demonstration of our capabilities. We have a truly diverse portfolio which showcases our expertise and experience.



Botanic Ridge Primary School

New Schools 2020 & 2022 Bundles, VIC

VICTORIAN SCHOOL BUILDING AUTHORITY (VSBA)

Building on ADCO's success delivering vertical school projects for the VSBA, we were appointed to deliver a bundle of eight new schools as part of their 2020 Program of Works.

The scope saw the design and construction of eight primary schools, some with attached Early Learning Centres and various sporting infrastructure. ADCO also delivered the design and construction of the Botanic Ridge Primary School which incorporated a full modular, off-site, prefabricated delivery methodology. Schools delivered under 2020 contract included: Beveridge Primary, Botanic Ridge Primary, Casey Fields Primary, Davis Creek Primary, Elevation Secondary College, Grayling Primary, Lucas Primary and Riverwalk Primary School.

Following ADCO's success on the schools 2020 bundle, we were subsequently awarded another bundle consisting of five larger schools in the 2022 Program of Works. These included: Deanside Primary School, Gilgai Plains Primary School, Strathtulloh Primary School, Willowbank Primary School and Wollert Primary School.

Each school offers an administration building with library, art, food and science learning spaces, a performing arts and physical education building, two learning neighbourhoods, outdoor hardcourts, sports field, bike sheds and playground.

A key component of the 2022 bundle, Wollert Primary School is a Supported Inclusion School, which includes high-quality, evidence-based educational provision for students with disabilities to study alongside mainstream students to the greatest extent possible in a safe, accessible, and supportive environment.



Type	Design & Construct
Value	\$350 million (cumulatively)
Duration	13 months (per bundle)



Bond University, QLD

BOND UNIVERSITY

ADCO's proud association with Bond University spans over 20 years and 25 projects. Our relationship has been a true partnership in the roll out of the University's capital works program across the Gold Coast campus.

Key project highlights include the multi award-winning Mirvac School of Sustainable development, the first 6 Star Green Star Education project in Australia, the Bond Institute of Health and Sport (BIHS), and the Abedian School of Architecture. This incredibly challenging project, designed by UK architect Sir Peter Cook, and its complex 'scoop' structure demanded many Australian construction firsts. The School of Architecture has been recognised locally and internationally for its stunning design and build quality. Elite sporting facilities include the Bond Institute of Health and Sport, and the rugby and AFL fields. The multimedia learning centre has been highly acclaimed at Queensland's RAIA Interior Design Awards.

"I site-managed the first ADCO building at Bond University in 2004 with my son Jarvis alongside me. He was eager to enter the construction industry and is now a well-regarded ADCO project manager on the gold coast. ADCO has gone on to complete many high-class finished buildings at Bond University; we are their builder of choice."

Wayne Robertson
ADCO, SITE MANAGER

Type	ECI to Design & Construct
Value	Cumulatively in excess of \$250 million
Duration	Various
Environmental Rating	6 Star Green Star (GBCA)

**Chisholm Institute Frankston
Redevelopment Stage 1, VIC**

CHISHOLM INSTITUTE

The \$60 million redevelopment for Chisholm Institute in Frankston involved the construction of one of the most advanced, innovative and contemporary teaching facilities in Victoria.

The finalised, state-of-the-art complex now provides a consolidated student hub, flexible learning hubs and contemporary teaching facilities over four storeys.

Building A is now home to nursing, allied health, early childhood education and hair and beauty.

Building B is a two-level collaborative training space that reflects real-world construction projects. Purpose-built and flexible, the integrated design combines student learning in plumbing, construction, electrical, and electro-technology from certificate to degree level qualifications. Construction of the project took place over two separable portions: the construction of building A, and the refurbishment of building B in addition to surrounding external works.

Type	Construct Only
Value	\$60 million
Duration	20 months

“The project has required significant planning, project management, collaboration and at times, patience. It is through ADCO’s commitment that we have delivered a training facility that sets Chisholm apart from our competitors and leads the way in vocational education.”

Stephen G Marks
CHISHOLM INSTITUTE
BOARD CHAIR





South Melbourne Vertical School, VIC

VICTORIAN SCHOOL BUILDING AUTHORITY (VSBA)

ADCO has completed the \$40 million South Melbourne Primary School, a new state-of-the-art building completed in just over 12 months. As the first vertical school to be rolled out for the Victorian Government, it was imperative that this project was handed over on time and delivered to a high standard.

The works involved a detailed excavation of the site and the construction of a new vertical school over six levels. The shared school and community facility caters for 525 students with an early learning centre, multi-purpose community rooms and indoor and outdoor multi-purpose sports courts. Incorporating an early learning centre, the shared school and community facility caters for 525 students. Distinctive design features include multipurpose community rooms plus indoor and outdoor sports courts.



“South Melbourne vertical school was an enjoyable project from start to finish. We overcame a number of challenges as a team and it’s great to have worked on what is now something of a Melbourne landmark.”

Tiffany Lucas

ADCO
CONTRACTS ADMINISTRATOR



Type	Construct Only
Value	\$40 million
Duration	12 months



Ridge View Secondary College, WA

WA GOVERNMENT

Our Ridge View project involved construction of a new secondary school on a greenfield site in the outer suburbs of Perth. The resulting works have accommodated 725 students from Years 7 to 12 and was completed in time for the school year.

Buildings included in the project scope are administration, information resource centre, staff centre and cafeteria, student services, technologies learning area, health and physical education building, storage and bin area and fire pump and irrigation pump rooms.

The facilities have been designed with simple, yet strong forms based on the proportion, scale and rhythm of their component parts. Exposed structure, mono pitch roofs, contrast of solid to glazed walls and clear articulation at ground and roof level provide dynamic views around the buildings.

The external elements of the school incorporate full sports facilities including multi-purpose hardcourts football oval and soccer pitch and hard and soft landscape areas, parking and drop-off facilities, and a transportable unit zone.

The works incorporate everything, from the staff centre and cafe to the high-tech learning areas and health and physical education building.



Type	Construct Only
Value	\$35 million
Duration	16 months





Indooroopilly State High School, QLD

DEPARTMENT OF EDUCATION QLD

ADCO has completed the new, 6FC Learning Centre building at Indooroopilly State High School in Brisbane's inner suburbs.

The facility provides a mix of learning spaces including general and flexible learning areas, design studios, multimedia rooms and science labs, staff room, ancillary areas, amenities, a new transformer and mains switchboard, and hard and soft landscaping.

The 6FC building is a three-level concrete structure with steel frames and roof trusses, incorporating two elevated links from the adjacent R Block, facilitating pedestrian movement to and from the new building.

ADCO was selected to build the next stage of development, which included a new sports hall, classrooms, amenities and tennis courts.

The project team's exceptional management of trades and procurement as well as management of the construction program resulted in completion of the project ahead of schedule.

Type	Construct Only
Value	\$15 million
Duration	15 months



Northbourne Public School, NSW

DEPARTMENT OF EDUCATION NSW

ADCO was pleased to be the main works contractor for the new Northbourne Public School, the second school for the rapidly growing suburb of Marsden Park, north-west of Sydney.

The design & construct project involved the creation of a two-storey courtyard building which accommodates 1,000 students.

ADCO's design and delivery team harnessed the intellectual property from their successful completion of the North Kellyville primary school delivered 12 months prior. The team replicated the immensely successful kit of parts approach to the schools design and provided extensive programme and cost benefits to SINSW as a result.

The \$40 million school provides 40 teaching spaces, library, multipurpose hall, office and admin space, special education units, canteen, amenities, out of school hours care accommodation, multi-purpose sporting facilities and outdoor play spaces, Covered Outdoor Learning Areas, parking and a drop-off/pick-up zone.

This brand new school is now providing high quality learning environments for the students of the local area.



Type	Design & Construct
Value	\$40 million
Duration	18 months



Victoria University Sunshine Skills Hub, VIC

VICTORIA UNIVERSITY

ADCO was pleased to build Victoria University's \$35 million Skills Hub at their Sunshine campus in Melbourne's west. One of several successful capital works projects delivered by ADCO in partnership with Victoria University.

The eye-catching, three-storey facility was designed by Woods Bagot and holds a 5 Star Green Star design rating. The Skills Hub offers students TAFE courses in health, community services and trades-related fields, with modern support services and amenities as well as flexible spaces, specialised teaching equipment incorporating robots, virtual reality goggles, computerised mannequins and simulation equipment, and environments to help students learn through real-life scenarios.

The visual design features a striking façade which incorporates a programmable LED lighting system and was subject to a design and construct solution by ADCO. Internally, the building incorporates high quality timber finishes and polished concrete floors to enhance the learning environment.

Type	Construct Only
Value	\$35 million
Duration	15 months
Environmental Rating	5 Star Green Star design (GBCA)



St Leonard's College Inspiring Innovations, VIC

ST LEONARD'S COLLEGE

The Inspiring Innovations project at St Leonard's College provides a supportive atmosphere for student development and is designed to be in sympathy with existing buildings on the site and the surrounding residential neighbourhood.

Key elements of the new development include: the New Leonardian Performing Arts Centre, with an approximate floor area of 2,800m² and capacity to seat 600 patrons, a brand new, three-storey building with teaching spaces, a canteen, eleven dedicated learning areas, a lecturette and dedicated exam area with a total floor area of roughly 4,200m², and an external outdoor agora linking the two new buildings.

The project's architecture beautifully blends contemporary design with the existing heritage feel of the school campus, which maintains buildings constructed as early as the 1870s.

St Leonard's College Inspiring Innovations won the 2022 Master Builders Victoria Excellence Award \$30 - \$80m category and the 2022 Master Builders National Commercial Construction \$50m-100m and Master Builder of the Year.



Type	Design & Construct
Value	\$50 million
Duration	18 months



Richmond High School, VIC

VICTORIAN SCHOOL BUILDING AUTHORITY (VSBA)

Richmond High School’s Griffith Street campus was the second vertical school delivered by ADCO for the Victorian School Building Authority (VSBA).

The school is set across four storeys and offers state-of-the-art learning spaces and sporting facilities, which will also be shared with the local community.

The project, designed by renown architects Hayball, was funded by a \$3.8 billion state government investment in Victorian schools.

Our successful completion of Richmond demonstrates quality in our Victorian school builds, and we were chosen for this project because of our clear understanding of the client’s brief and our ability to identify and manage key challenges to deliver on time for day 1, term 1.

The high-quality finish and timely completion of this and the South Melbourne vertical school project were instrumental in ADCO being entrusted as delivery partner for the VSBA on the 2020 and 2022 school bundles valued at \$350 million.



Type	Construction Management
Value	\$35 million
Duration	18 months





McKinnon Secondary College, VIC

VICTORIAN SCHOOL BUILDING AUTHORITY (VSBA)

McKinnon Secondary College was completed in time for students to start the school year on their brand-new campus in Bentleigh East, Victoria.

ADCO's build for Victorian School Building Authority (VSBA) offers students a new, four-storey building that caters for up to 1100 students.

Officially serving as the new middle school campus for the school, Years 8 and 9, students enjoy world-class, modern learning environments for science, technology, design, art, music and drama – as well as a brand-new gymnasium with retractable seating, a commercial kitchen, outdoor sports amenities and landscaping.

Type	Design & Construct
Value	\$45 million
Duration	18 months



Morwell Trade Skills Centre (MTSC), VIC

TAFE GIPPSLAND

ADCO built the Morwell Trade Skills Centre (MTSC) project for TAFE Gippsland, in Victoria.

Designed by GHD, the \$35 million upgrade to the TAFE Gippsland campus in Morwell delivers a modern, high-quality training facility in the heart of the Latrobe Valley.

The project included demolition of an existing single-storey building, and the construction of the new 5,000m² two-storey facility. The MTSC provides facilities for students to train in: electro-technology, new energy systems, instrumentation and plumbing trade training, with specialist workshops, lab facilities and general-purpose classrooms.

The facility now provides many new vocational training opportunities to students of the Latrobe Valley and broader Gippsland region.



Type	Construct Only
Value	\$35 million
Duration	18 months
Environmental Rating	5 Star Green Star Education V1 (GBCA)





Hedland State High School, WA

WA GOVERNMENT

ADCO delivered the new facilities at Hedland Senior High School in South Hedland, Western Australia, for the WA Government.

The eye-catching school features striking REDCOR steel façade paneling, which was rusted off-site prior to installation.

The build involved two separable portions, consisting of a new gymnasium and classroom building, and refurbishments to the STEM, IT and English areas. The gymnasium offers multipurpose, Helsinki 10/10 sprung sports flooring suitable for basketball, netball, volleyball, and badminton.

The project was awarded Master Builder's Best Education Building (\$10-\$20m) Excellence in Construction for the Kimberley & Pilbara region and also 'Best Regional Project' overall.

As the Builder of Choice for the High School and both stage one and two of the Port Hedland International Airport, ADCO is proud to be building these important developments for the Port Hedland community.

Type
Value
Duration

Construct Only
\$13 million
13 months





South Rock State School, QLD

DEPARTMENT OF EDUCATION QLD

ADCO was the Builder of Choice for the South Rock State School (Yarrabilba Stage 2) development, located south of Brisbane for the Queensland Department of Education.

The \$60 million design and construct project is a new State Primary School of the highest standards. Comprising of 28 general learning areas and two flexible learning areas across the Years 1-3 and Years 4-6 precincts, a central campus resource centre, multipurpose hall, sports and playground facilities, canteen and covered areas, and administrative facilities including staff amenities.

ADCO's design and delivery have managed the integration of several significant efficiencies and value add initiatives into the school's master planning phase. These innovations provided the Department of Education with certainty of delivery, especially around program for this key piece of State infrastructure.



Type	Design & Construct
Value	\$60 million
Duration	12 months



Swinburne Industry 4.0 Test Labs, VIC

SWINBURNE UNIVERSITY

ADCO partnered with Swinburne University to help them complete their groundbreaking Industry 4.0 Test Lab, a significant extension and enhancement of the existing CSIRO research facility at Swinburne University's campus in Clayton, south east of Melbourne.

Upon completion, the facility became the world's first operational Industry 4.0 Test Lab for carbon composite manufacturing, as part of the university's research into digital manufacturing processes – including cutting-edge developments in the field of 3D printing.

The new Test Lab offers a warehouse and office covering a total floor area of 460m2. It now houses the carbon fibre press, which is used to develop reduced weight carbon fibre.

We are pleased to have worked with Vincent Crisp Architects and CBRE Project Management to complete this vital piece of research infrastructure for the University.

Type	Construct Only
Value	\$5 million
Duration	5 months





Centre of Excellence Macquarie University, NSW

NEXTSENSE

ADCO is delighted be delivering the \$75 million NextSense centre for innovation, on Macquarie University's campus in Sydney's north.

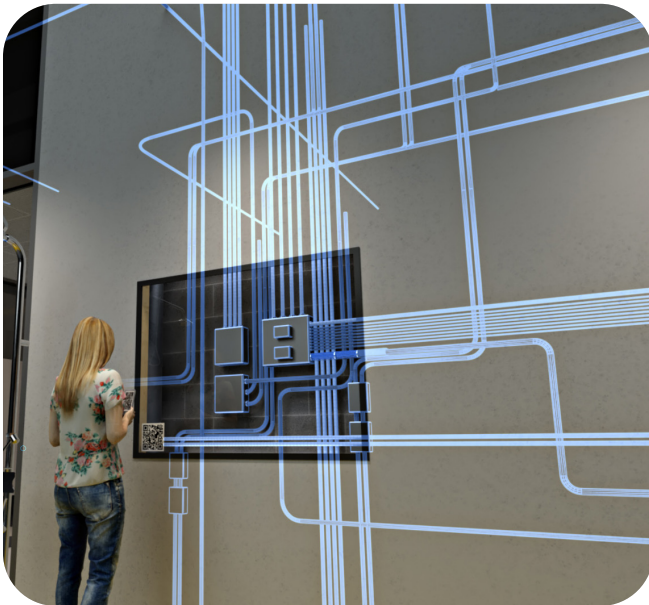
NextSense's (previously known as the Royal Institute for the Deaf and Blind) state-of-the-art, exemplar facility will deliver innovative and dedicated services to people with hearing or vision loss and advance education in these fields of learning. The future-focused development will provide best-practice support, to achieve exceptional outcomes for current and future generations.

NextSense will relocate from the existing North Rocks facility to its new Macquarie University location. This will bolster the strong partnership and collaborative relationship that exists between NextSense and Macquarie University, enhancing research, collaboration and resources.

To ensure a successful project outcome, ADCO will deliver this exciting project using industry leading technologies such as virtual reality and LiDAR scanning to enhance the client's experience and create an entirely transparent construction journey. The project is also targeting a 5 Star Green Star certification.



Type	Design & Construct
Value	\$75 million
Duration	24 months
Environmental Rating	Targeting 5 Star Green Star



Institute of Applied Technology for Construction, NSW

TAFE NSW

ADCO is building the new \$85 million Institute of Applied Technology for Construction (IATC) at TAFE NSW Kingswood – Nepean, in Sydney’s west.

Once complete, the IATC will be a signature construction training hub aligned to industry. When open, it will train up to 700 trades students each year.

The Institute of Applied Technology for Construction (IATC) is a flagship educational centre supporting the pipeline of major infrastructure projects, civil construction works, and residential developments, as well as future projects that will service Western Sydney’s fast-growing population. It has been designed to accommodate up to 3,500 enrolments by 2030, assuming 700 apprentices per year.

ADCO’s unique approach includes use of innovative partners for future-proofing the facility, a pathway from 5 Star Green Star up to 6 Star design and as-built, and a learning-enabled construction site.

Type	Design & Construct
Value	\$85 million
Duration	18 months
Environmental Rating	Targeting 6 Star design and as built (GBCA)

Pymble Ladies College Aquatic Centre, NSW

UNITED CHURCH IN AUSTRALIA PROPERTY TRUST

ADCO delivered the Centenary Sporting Precinct for renowned private school Pymble Ladies College, situated on Sydney's North Shore.

The new \$40 million state-of-the-art sporting facility houses a new elite aquatic and fitness centre with high quality sporting amenities. It includes; a 50-metre indoor Olympic standard swimming pool, an indoor learn to swim pool, multiple diving platforms, a gymnasium with high-tech sporting equipment such as various weight-types and rowing machines, and new outdoor hockey playing fields and tennis courts suspended over an underground two level car park.

Inside, the main reception allows visitors to become part of the experience with a huge LED television screen suspended on structural beams streaming live games and highlights.

The successful completion of the centenary development combines ADCO's extensive experience in the private school education sector with our major aquatic project portfolio.

The new, \$40 million state-of-the-art sporting facility houses a new elite aquatic and fitness centre with high-quality sporting amenities.

A landmark in private school education facilities, this high-profile sports complex sets the new benchmark for athletic facilities for the private school sector.

Type	Design and Construct
Value	\$40 million
Duration	20 months





Great Hall & Aquatic Centre, NSW

KNOX GRAMMAR

The \$30 million project saw completion of an integrated, multi-purpose facility providing a high-quality entertainment venue for special events while simultaneously catering for the day-to-day requirements of the school's aquatic and sporting activities.

The building provides an auditorium and grand hall with seating for 2,500 people which can also be used for basketball and indoor sports activities. The hall also has a fully functional stage complete with high-tech, audio-visual capabilities and automated retractable seating to accommodate additional capacity for performances.

The multi-purpose hall is suspended over an Olympic standard 50-metre swimming pool, learn to swim centre, gymnasium, changing rooms and amenities.

The building provides an auditorium and grand hall with seating for 2,500 people which can also be used for basketball and indoor sports activities.

Type	Construct Only
Value	\$30 million
Duration	24 months



Deakin University Student Accommodation, VIC

DEAKIN UNIVERSITY

ADCO's team completed the \$66 million student accommodation for Deakin University on their Burwood campus. The development provides 512 beds in a combination of two, four and six-bedroom apartments within three buildings, up to thirteen levels high.

The project features the latest in communal facilities for students, including a central common area with lounge, kitchen and dining zones, dedicated study rooms, laundrette facilities, open-plan recreation space with flexible furniture and a games area, landscaped outdoor entertainment area with BBQ, seating and lights, and rooftop solar panels.

The \$66 million student accommodation project integrates 2, 4 and 6-bedroom apartments within three buildings, over 13 levels.

The existing administration area was also refurbished to enhance student services. Construction was delivered over two stages – the first stage involved the concurrent delivery of wings 1 and 2, and the second stage delivered wing 3.

Type	Construct Only
Value	\$66 million
Duration	12 months
Environmental Rating	5 Star Green Star Certified Building (GBCA)



La Trobe University Sports Stadium, VIC

LA TROBE UNIVERSITY

The La Trobe University Sports Park at La Trobe University, Melbourne, has been designed as the first purpose-built facility of its kind in Australia. The sprawling site integrates academic research and teaching functions with world-class playing facilities for professional, state and community clubs.

The striking, \$50 million development at the University's Bundoora campus was delivered through a design and construct method of procurement.

Project scope saw the delivery of a teaching and research building, including six community courts plus surrounding plaza with associated softscape and hardscape landscaping.

The teaching and research building (levels 1 and 2) comprises of public lounge, reception desk, cafe, community courts, change room facilities, research teaching lab, bio-mechanics lab, strength and conditioning training zone, environmental chamber, meeting rooms and boardrooms, open offices, end-of-trip facilities and a back-of-house zone.

The Sports Park has a major focus on environmental sustainability, with the Stadium achieving a 6 Star Design and As Built rating from the Australian Green Building Council.



Type	Design & Construct
Value	\$50 million
Duration	14 months
Environmental Rating	6 Star Green Star Design & As Built (GBCA)

Passfield Park School Redevelopment, NSW

SCHOOL INFRASTRUCTURE NSW

ADCO is proud to once again, have been builder of choice for NSW Schools infrastructure on the redevelopment of the Passfield Park School in Sydney's southern outskirts.

Passfield Park caters for students with moderate or severe intellectual disabilities from Kindergarten to Year 12. Many of the students may also be on the autism spectrum or have sensory and/or physical disabilities. The redevelopment will ensure a rich learning environment that allows the students to be engaged in their learning and address their learning goals.

Construction included 16 new permanent teaching spaces, a new library and hall, a new entrance and drop-off area for parents/carers and students, new modern core facilities such as staff and administration areas, a new covered outdoor learning area and an indoor sports facility that includes a hydrotherapy pool.

As one of the foremost builders of Australian education facilities, and having previously constructed the Aquatic & Wellbeing Centre on the campus, ADCO welcomed the opportunity to complete this important development with the school.

Type	Design & Construct
Value	\$25 million
Duration	14 months





Teaching & Learning Building 01, VIC

CAULFIELD GRAMMAR SCHOOL

ADCO is pleased to be working with Caulfield Grammar School once again, to construct a state-of-the-art Senior School Teaching and Learning Building at Caulfield Campus.

The ground-breaking project has an environment and sustainability focus and is designed to include general, informal and specialist learning zones, integrated staff preparation and administration spaces. The new facility will provide a holistic, all-encompassing approach to physical and mental wellbeing for all building users.

The building and associated works will see ADCO strengthen an already close and collaborative relationship with Caulfield Grammar School to deliver this contemporary learning environment, purposefully designed for the future of education.

As one of the foremost builders of Australian education facilities, and having previously constructed the Aquatic & Wellbeing Centre on the campus, ADCO is looking forward to completing this important development with the school.

Type	Design & Construct
Value	\$75 million
Duration	18 months
Environmental Rating	Targeting 6 Star Green Star Design and As Built

PLC Sports, Aquatic and Fitness Centre, VIC

PRESBYTERIAN LADIES' COLLEGE

After completing the ECI phase, ADCO secured the Presbyterian Ladies' College – Sports, Aquatic and Fitness Centre. Located in Burwood, the centre will provide a new state-of-the-art sporting facility, housing a new elite aquatic and fitness centre with high-quality sporting amenities.

This magnificent facility will be the most significant project ever undertaken by the College and will help enhance the breadth of their educational and experiential sports and learning programs within world-class, sustainably-designed facilities.

The sports centre will be the size of three basketball courts, which can also be configured for badminton, netball and volleyball. The project also includes a 50 metre, eight lane swimming pool, a learn to swim pool, diving towers and seating for 400 visitors.

There is a gymnasium and spin room, multipurpose spaces for aerobics, dance, relaxation, table-tennis and class teaching, staff areas, collaborative meeting spaces for students and staff and an underground carpark.

“Right from the first time I was introduced to the ADCO team, it was really evident to me that they were right across the level of detail required to get this project across the line. They bring to the table – every time –their expertise and their willingness to be part of a team.”

Cheryl Penberthy

PRINCIPAL, PRESBYTERIAN LADIES COLLEGE

Type	ECI/Design & Construct
Value	\$85 million
Duration	25 months





Roeburne District High School (DHS) New School Redevelopment, WA

WA GOVERNMENT

ADCO is pleased to be awarded the redevelopment of Roebourne DHS. This is an important investment in the future of local students and the wider community.

The major redevelopment will provide new facilities for the staff and students attending the school. This includes a particular focus on the delivery of programs to engage First Nations children and a design that provides greater opportunities for all staff and students to understand and respect First Nations history, culture, and language.

Works include the demolition of existing school structures in stages, with the construction of a new primary school, cafeteria and cooking block,

administration and student services block, dance, music and sport hall, science and library block, high school, language centre, car park, landscaping, and recreational areas.

The new school is being built in its entirety at the existing school site which is located 30 minutes north of Karratha. The school has been operating at its present site since 1961 and its redevelopment will greatly enhance the availability of school facilities to the local families in and around the Pilbara Region.

Type	Design & Construct
Value	\$67 million
Duration	22 months



North Kellyville Public School, NSW

DEPARTMENT OF EDUCATION NSW

ADCO was awarded the design and construct contract for the new school on Hezlett Road, Kellyville to meet the education needs of the growing local community.

Built on a greenfield site, new facilities include 40 new state-of-the-art future-focused classrooms, along with a hall and library. The landscaped outdoor spaces feature covered outdoor learning areas (COLA), and a range of play spaces and sporting facilities.

The new school can now host up to 1,000 students, more than a third of the area's student population.

Type	Design & Construct
Value	\$41 million
Duration	11 months



University of Western Australia (UWA) Reid Library Refurbishment, WA

THE UNIVERSITY OF WESTERN AUSTRALIA

Located just 5 kilometers from Perth, Reid Library is one of the University's busiest buildings, boasting a substantial collection of informal learning and research spaces. It is a hub frequented by students from various UWA disciplines, as well as the broader community.

ADCO has been selected as the Builder of Choice to carry out the refurbishment works on this iconic building. The goal is to maximise opportunities and enhance well-being, inclusivity, and community engagement. The scope of work includes addressing significant existing deficiencies and the end-of-life status of the building's service infrastructure. This involves improving sustainability and future-proofing these services and infrastructure for greater efficiency and reduced costs.

Importantly, ADCO aims to enhance the student experience by upgrading facilities and providing contemporary spaces. These improvements will, in turn, support UWA's Master Plan, including the 2030 Vision, the 2025 Strategic Plan, and the Estate Strategy.

Type	Managing Contractor
Value	\$18 million
Duration	10 months

OTHER EDUCATION PROJECTS



Waitara Public School

SCHOOLS INFRASTRUCTURE
NSW

Type	Design & Construct
Value	\$30 million
Location	Waitara NSW



Curl Curl North Public School

SCHOOLS INFRASTRUCTURE
NSW

Type	Design & Construct
Value	\$31 million
Location	North Curl Curl, NSW



Baldivis South Secondary School

DEPARTMENT OF EDUCATION
WA

Type	Construct Only
Value	\$35 million
Location	Perth, WA



Southern Cross University Building C

SOUTHERN CROSS UNIVERSITY

Type	Construct Only
Value	\$40 million
Location	Gold Coast, QLD



James Cook University Student Accommodation

JAMES COOK UNIVERSITY

Type	Design & Construct
Value	\$35 million
Location	Cairns, QLD



Ashmore TAFE New Trade Block

DEPARTMENT OF HOUSING AND
PUBLIC WORKS

Type	Design & Construct
Value	\$10 million
Location	Gold Coast, QLD



**“We are delighted ADCO
has become our partner
in development and
construction over the past
decade, being a critical
partner in the successful
delivery of innovative
buildings for bond university.”**

Professor Tim Brailsford
BOND UNIVERSITY

A man and a woman are shown in profile, facing right, at a construction site. They are both wearing white hard hats with the ADCO logo and the number '50'. The man is wearing a dark blue shirt and a high-visibility yellow safety vest. The woman is wearing a black jacket and a high-visibility yellow safety vest. They are both smiling. The background shows a construction site with a large concrete structure and a blue sky. A large, semi-transparent white shape is overlaid on the bottom left of the image, containing the text.

OUR PEOPLE

**Our people are our point of difference.
They are ADCO.**

We are people who build.

ADCO recognises that our people, and everyone we work with all unite to form the core of our business. Our success and reputation have been achieved because of the abilities and expertise these people bring to our projects.



A portrait of Judy Brinsmead, a woman with blonde hair, smiling. She is wearing a light pink double-breasted blazer with gold buttons over a dark top with a colorful patterned collar. Her hands are clasped in front of her.

Judy Brinsmead AM

Chairman

Judy is Chairman of the Board and integral to the strategic management of ADCO. A solicitor and barrister, she holds a Bachelor of Laws with Honours and was previously a Partner at Morris Fletcher & Cross (now MinterEllison).

Judy brings a focused leadership style and over three decades of experience in Construction and Property, having joined ADCO as an Executive Director in 1989. She has a detailed understanding of the business and continues to be instrumental in ADCO's success and growth. Strong on community, Judy is also a member of the Board of Trustees of Bond University and was on the Joint Marketing Committee for the 2018 Commonwealth Games.

TOM HILL

Director

Tom commenced with ADCO in 2011. Holding a Bachelor of Business majoring in Management from Bond University, he is recognised as an integral part of ADCO, providing valuable leadership and guidance.

His focus is on providing strong connections between our clients, our people and ADCO's vision and values. Tom chairs the Brinsmead Hill Family Foundation which focuses on mental health, education and community support.



NATIONAL TEAM



Neil Harding

Managing Director

Neil has led ADCO since 2017 and has overseen a period of dynamic change and growth. With over 25 years of experience in the construction industry, Neil has held executive roles in Australia and internationally. He is a strong, strategic leader with a passion for building supportive, performance-driven cultures and developing meaningful industry-wide relationships.

He holds a Bachelor of Science with Honours (Sheffield Hallam University) and is a Fellow of the Royal Institution of Chartered Surveyors. Neil has a proven track record of driving change, delivering results and caring deeply about developing people and improving the industry for all who are part of it.



Brad McCarthy

Chief Strategy Officer

Brad is responsible for overseeing all pre-construction functions at ADCO. During a career already spanning more than two decades, he has held senior construction management positions in both Australia and New Zealand.

For the past 15 years, Brad's strong commercial acumen has helped to sustain and grow ADCO's market presence by managing national client relationships, converting strategic opportunities, targeting key growth sectors and successfully driving geographic expansion.

Brad holds a Bachelor of Arts in Media and Communication from Massey University in Palmerston North (NZ).



Cameron McBurnie

Chief Commercial Officer

Cameron has dual senior roles within ADCO, serving as Chief Commercial Officer in addition to being a Board Director. With a Construction and Property Development career spanning more than 25 years, he was previously a senior property lawyer at Deacons (now Norton Rose) and brings a direct and highly detail-oriented approach to ADCO's risk management and commercial processes.

Cameron is a Fellow of the Australian Institute of Company Directors and holds a Bachelor of Science (University of NSW) and a Bachelor of Laws with Honours (Queensland University of Technology).

NATIONAL TEAM



Gareth Adams

Chief Financial Officer

Gareth is a highly qualified financial professional with over 20 years of experience in the construction industry, including leadership roles in both Australia and the United Kingdom.

As Chief Financial Officer at ADCO, Gareth is responsible for the Group's IT, accounting, treasury and financial operations. His passion and diligence are underpinned by a Bachelor of Science (Economics) with Honours from the University of Bath and a Post Graduate Diploma in Finance and Strategy from University of Oxford.

Gareth is a Chartered Accountant (ACA) with The Institute of Chartered Accountants in England and Wales.



Shanelle Woodall

Head of Corporate Affairs

Shanelle brings 20 years of industry experience to her role as Head of Corporate Affairs. With a multi-faceted background in legal and commercial roles in the UK, US and Australia, she values the roles and responsibilities of all who contribute to construction projects – including employees, trade partners, clients and external stakeholders.

Shanelle studied law at QUT and is a graduate of the Australian Institute of Company Directors and the inaugural ADCO Leaders Program. She is passionate about supporting women, both within ADCO and the wider industry, and is an executive board member 'Women of ADCO' and committee member of the National Association of Women in Construction (QLD).



Ross Trethewy

Head of Safety and Environment

Ross is an industry specialist in Health, Safety and Environmental (HSE) management. With more than 25 years of experience, he holds a Bachelor of Building with First Class Honours/University Medal (UNSW) and a PHD in OHS Performance Measurement (UNSW).

Ross brings highly specialised skills in conversion and the delivery of complex projects, legal and expert opinion, and high-risk work methodologies. He is also a passionate advocate for increased focus on upstream design and planning to reduce downstream risks in project delivery through integrated risk management outcomes. Ross is a member of the Federal Safety Commissioner Industry Reference Group and represents ADCO within the Master Builders Association.

NATIONAL TEAM



Sean Conroy

Head of Risk and Compliance

Sean has more than 25 years of experience in the construction industry, and has been part of the ADCO team since 1997.

With formal training in both Quantity Surveying and Law, he excels at resolving complex practical, legal and financial challenges faced by our team and clients across all stages of the project development process. He holds a string of high-level qualifications including graduating with a Bachelor of Laws (UNSW) with the prestigious University Medal.

Sean's proactive management style and deep expertise continues to ensure ADCO's safety and quality systems are maintained at industry best practice levels.



Matt Galton

General Manager - Defence & Special Projects

Matt is one of Australia's foremost experts in Defence infrastructure, with over three decades of military experience spanning tactical to strategic levels.

His final Defence appointment prior to joining ADCO was Director General Capital Facilities and Infrastructure (CFI), where he had direct responsibility for the development and delivery of the estate and infrastructure major capital works program, a portfolio of around 180 projects valuing over \$30 billion.

Matt's experience has seen him serve Australia in the Middle East, Afghanistan, Solomon Islands, East Timor and at home, in diverse capacities. He has received multiple decorations, including the Distinguished Service Cross, and attained the rank of Brigadier during his service.



Mike Rinaudo

Defence Sector Lead

Mike fills a highly specialised role at ADCO, backed by more than 30 years of Defence industry experience. Following a decade of service with the Royal Australian Air Force in Australia and overseas, Mike's construction credentials have been sharpened through a range of defence and civil projects, including defence base master-planning and the development of air-side facilities and pavements, airfield rescue and fire services, explosive ordnance storage and other defence-related infrastructure.

Mike holds postgraduate qualifications in Management and a Master of Science from the Royal Military College of Science (UK). He is also a Fellow of the Institution of Engineers Australia and a Registered Professional Engineer in Queensland.

STATE MANAGERS



Neil Harding

NSW State Manager

Neil has lead ADCO since 2017 and has overseen a period of dynamic change and growth. With over 25 years of experience in the construction industry, Neil has held executive roles in Australia and internationally. He is a strong, strategic leader with a passion for building supportive, performance-driven cultures and developing meaningful industry-wide relationships.

He holds a Bachelor of Science with Honours (Sheffield Hallam University) and is a Fellow of the Royal Institution of Chartered Surveyors. Neil has a proven track record of driving change, delivering results and caring deeply about developing people and improving the industry for all who are part of it.



James Prattent

QLD State Manager

James now leads our Queensland team after having previously built our Western Australian operations into one of the leaders of the construction industry over a 5-year period.

He has over 20 years' experience in both contractor and client roles, working extensively across multiple sectors, successfully delivering projects in metropolitan and regional areas.

James has a strong track record of understanding client needs and market trends, bringing high professional standards and strong leadership to teams he guides. His exceptional communication and people skills continue to be key to ADCO being the Builder of Choice.

James holds a Bachelor of Science in Construction Management and Economics, having graduated from Curtin University and is a registered builder and graduate of the Australian Institute of Company Directors.



Lyn O'Brien

WA State Manager

Lyn leads our Western Australian operations with over 15 years of experience across both pre-construction and management roles.

With hands on experience spanning domestic and international markets, together with broad reaching industry relationships, she is focused on providing high-quality levels of delivery and building long-lasting client relationships. Lyn's collaborative leadership style ensures we consistently deliver responsive outcomes that are structured to the unique requirements of every client project.

Lyn is a National Director of NAWIC and was awarded the 2022 LHQ Outstanding Leadership Award for Women in Construction. She holds a Bachelor of Construction Economics and Masters in Quantity Surveying.



Andrew Staedler

VIC State Manager

Andrew is an accomplished property and construction professional with proven experience in construction management, new business development and regional business unit leadership. Bringing 25 years' worth of knowledge and strategy gathered from the successful delivery of major projects in Victoria. His expertise is underpinned by a Bachelor of Planning Design (Property and Construction) and a Bachelor of Property and Construction (Honours), with University of Melbourne.

Andrew takes pride in developing expert teams capable of delivering outstanding quality projects and maintains a strong focus on leadership, creativity and genuine collaboration matched by equal focus on diligent execution and outcome certainty.

**“ADCO recognises
that our people, and
everyone we work
with, all unite to
form the core of our
business”**

Neil Harding
MANAGING DIRECTOR



FINANCIAL STRENGTH

Financial security is one of the most critical elements to consider when appointing a construction partner.

ADCO provides financial surety for our clients and their financiers. We maintain a policy of profit reinvestment and working capital management to ensure our balance sheet remains commensurate with the size of our business. ADCO exceeds the financial requirements for licensing in each state and territory, for private and government projects.

We have strong cash and liquid asset reserves and a blue-chip client base, which translate into consistent cash flow and profitability. Our audited financial statements are available on request.



OUR COMMITMENTS



Diversity and Inclusion

ADCO celebrates and embraces diversity. We want our workplaces to reflect the communities and clients we serve – and be places where everyone is treated equitably, fairly and with respect.



Community Engagement

Community has been central to the ADCO story for over 50 years. We continue to engage actively with charities, community groups and like-minded businesses to create positive impacts cross Australia.



Environmental, Social and Governance

We commit to the integration of our environment social and governance (ESG) framework across our business undertakings.



Women of ADCO

ADCO is a leader in elevating the status and influence of women in Australia's construction industry.



Reconciliation Action Plan

We are committed to a construction industry that builds more meaningful relationships, opportunities and outcomes for Aboriginal and Torres Strait Islander peoples.



Novus

Innovation isn't optional. Our future success depends on it.

We have an in-house group of innovation champions, NOVUS, established in 2019.



Modern Slavery

We recognise our responsibility as part of a global supply chain.



ADCO Balance

Empowering ADCO's workforce to thrive through balance, fostering a culture of well-being and excellence.

ACCREDITATIONS, CERTIFICATIONS & MEMBERSHIPS



Safety Management

Our safety management system is independently certified to AS45001 (Occupational Health and Safety Management Systems)



Environmental Management

Ensuring compliance with legislative requirements and industry practices, this system is certified to ISO 14001:2018 (Environmental Management Systems).



Quality Management

ADCO's quality management system complies to AS/NZS ISO 9001:2015 and has third party endorsement through NCS.



Information Management System

Our information security management system is independently certified by third party auditors as compliant with ISO/IEC 27001:2013 (Information Security Management).



Federal Safety Accreditation

ADCO complies with the Australian Government's National Code of Practice for the Construction Industry and is accredited with the Office of the Federal Safety Commissioner.



Green Buildings

ADCO is a proud member of the Green Building Council of Australia and committed to the success and increased adoption of sustainable construction practices.



The National Association of Women in Construction

ADCO is a proud member of NAWIC, which is an organisation led by a team of passionate volunteers who all strive to help champion and empower women in the construction and related industries to reach their full potential.



Diversity Council Australia

ADCO is committed to providing an inclusive and diverse workplace where employees and others in the workplace are treated equitably, fairly and with respect.



Supply Nation

ADCO is committed to increasing Indigenous Participation in our projects both through direct employment and procurement of goods and services.



Master Builders Association

As a Master Builders Association Member, ADCO is a trusted organisation of a community of builders who meet regularly at a local and national level.



Best Managed Companies

For the second year in a row ADCO is acknowledged as one of Australia's Best Managed Companies (BMC) for 2022.

The BMC program identifies and celebrates privately-owned and managed companies across Australia that set the highest standards of business performance, and shines a light on the power of private business as a key driver of Australia's economy.



Kinaway Chamber of Commerce

ADCO proudly partners with Kinaway Chamber of Commerce, which is a leading Victorian organisation dedicated to supporting Victorian Aboriginal and Torres Strait Islander business owners.



Noongar Indigenous Chamber of Commerce and Industry

ADCO is a proud partner with the Noongar Indigenous Chamber of Commerce and Industry which support Aboriginal owned businesses and the broader Western Australia business community.



Kari Foundation

ADCO has a long-standing partnership with the Kari Foundation, which works with the Community to create meaningful points of connection to share Aboriginal culture and achievement.

Sydney

Address

Level 2, 7-9 West Street,
North Sydney, NSW 2060

Postal

PO Box 1982, North Sydney,
NSW 2059

Email

Sydney@adcoconstruct.com.au

Reception

(02) 8437 5000

Gold Coast

Address

Level 5, 7 Bay Street,
Southport, QLD 4215

Postal

PO Box 10393, Southport BC,
QLD 4215

Email

Southport@adcoconstruct.com.au

Reception

(07) 5577 0900

Melbourne

Address

Level 9, 75 Dorcas Street,
South Melbourne, VIC 3205

Email

Melbourne@adcoconstruct.com.au

Reception

(03) 9832 1400

Brisbane

Address

23 Graham Street,
Milton, QLD 4064

Postal

PO Box 1167, Milton,
QLD 4064

Email

Brisbane@adcoconstruct.com.au

Reception

(07) 3511 5555

Perth

Address

Level 5, 12 The Esplanade,
Perth, WA 6000

Postal

PO Box 1141, West Perth,
WA 6005

Email

Perth@adcoconstruct.com.au

Reception

(08) 9211 0900

