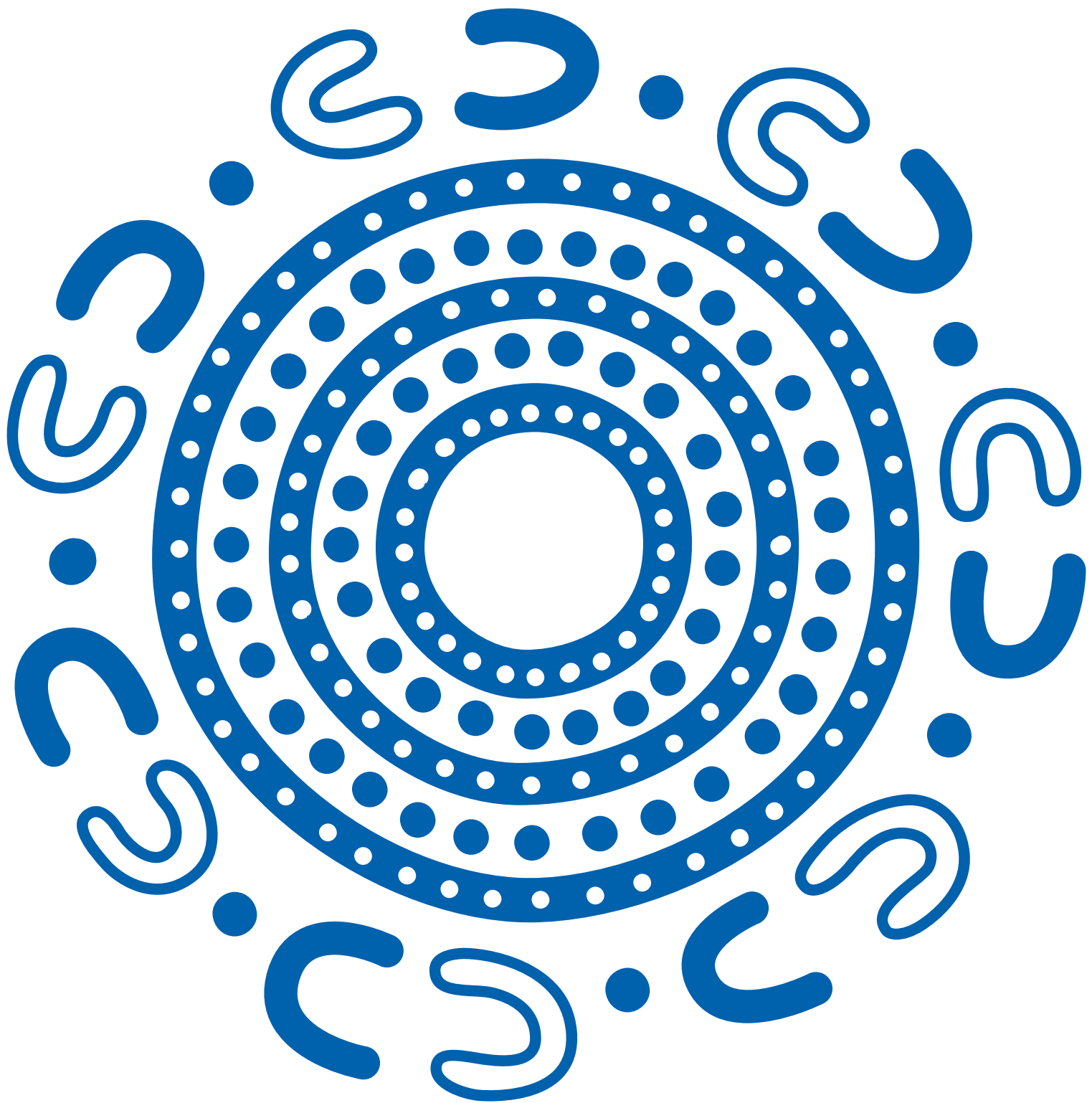


CAPABILITY STATEMENT

Health



ADCO



**We acknowledge the Traditional Custodians
of the land and pay our respects to their
Elders past and present.**

Artwork by Jason King.

Jason is a proud Gumbaynggirr man, born in Murwillumbah, and raised in nearby Tumbulgam, in Northern New South Wales.

CONTENTS

04

People who build

06

Expertise and reach

Safer by Choice

08

Our health credentials

11

Our health clients

12

Our work

31

Other health projects

32

Our people

National team
State managers

38

Financial strength

40

**Accreditations,
certifications &
memberships**

PEOPLE WHO BUILD

Since our beginnings in 1972, ADCO has been steered by family values, trust and honesty. Everything we do is underpinned by our core values of responsibility, dynamism and teamwork.



WHO WE ARE

We are people who build. It's been that way for more than half a century and today we are one of Australia's largest construction businesses. Proudly, we continue to be family owned.

Our story

A force in Australian construction – guided by family values, trust and putting people first.

The ADCO story began back in 1972. In the years since then, we've grown to be a multi-billion-dollar construction business guided by an unwavering commitment to quality, our clients, and our people. These foundations have seen us become one of the top private companies in Australia with a blue-chip client list and an award-winning portfolio of almost 4,000 successfully completed buildings from early work packages to \$300+ million projects.

Builder of Choice

ADCO aspires to be the *Builder of Choice* for our clients, our consultants, our trade partners, and our people.

Becoming the *Builder of Choice* doesn't just happen. It takes responsibility, teamwork and a dynamic mindset. It's about delivering on our promises and bringing energy to every stage of every project to achieve shared goals. It means completing projects on time, on budget and to the highest standards possible. We call this the ADCO Way, and it's embedded in our DNA. It's the way *People who Build* go to work.

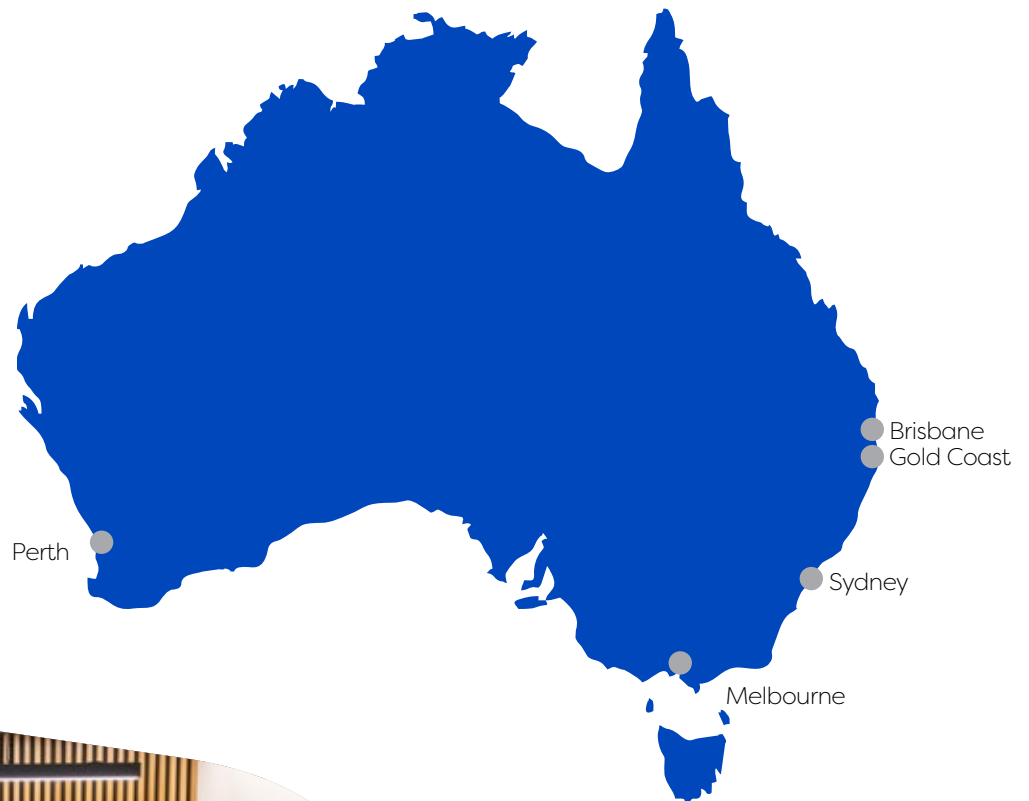


EXPERTISE AND REACH

ADCO has a true national presence with offices throughout Australia.

ADCO is an industry leader with an operational footprint that touches every corner of the Australian market. The strength of our award-winning expertise, capability and people is reflected by exceptionally high levels of repeat business and long-established client relationships across key private and institutional corporations, as well as all levels of government.

Each year, our projects are delivered via early contractor involvement, design, and construct, managing contractor, and traditional construction methods of procurement. Our national presence ensures we can offer holistic and seamlessly delivered projects up to \$300+ million anywhere in Australia.



● ADCO Office Locations



Safer by CHOICE

It is our commitment to always ask ‘is there a safer choice?’

Safer by Choice is a philosophy that targets a genuine attitude change towards safety. Running deep within the ADCO business, it goes far beyond statistics and actively promotes personal responsibility and careful decision making.

Underpinned by three commitment pillars of action of Taking Responsibility; Supporting Each Other and Focusing on Positives, Safer by Choice recognises that everyone involved in the design and delivery of a project is a decision maker, and we all have the ability to improve safety, for ourselves and others, by choice.

Establishing a successful safety culture is a long-term commitment from all ADCO employees, guided, fostered and preserved by the leadership team.

ADCO was awarded the ‘Office of the Federal Safety Commissioner’s National Excellence in Workplace Health and Safety’ award for our work on Lakelands Station project at the Master Builder’s Awards in November 2022.



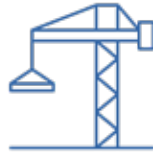
People who
build a healthy
Australia.

Bendigo Health Rehabilitation Centre, VIC

**OUR HEALTH
CREDENTIALS**



1972
first project built



185+
health projects completed



1850+
hospital beds



We are people who build a healthier Australia.

Our first contract in 1972 was a brownfield hospital project and, more than half a century later, we continue to lead the market in the delivery of high-quality healthcare infrastructure. Our experience encompasses major ward extensions, greenfield hospitals, specialist, sub-acute and acute services, ICUs, oncology, emergency departments, rehabilitation, and mental health facilities.



“ADCO were very professional, respectful, responsive and proactive in addressing any unforeseen issues that arose during construction.”

Graeme Leverington

INFRASTRUCTURE & PLANNING, WA COUNTRY HEALTH SERVICE
SENIOR PROJECT MANAGER

“I recommend ADCO as a highly reputable, reliable and consistently performing contractor who respect the client relationship and take a long-term view regarding project delivery.”

Stephen Lowndes

ROYAL REHABILITATION CENTRE
CHIEF EXECUTIVE OFFICER

OUR HEALTH CLIENTS

We are proud to have provided facilities for some of the largest health organisations in the country. Testament to our success is our significant repeat clientele. Our health clients include:





OUR WORK

ADCO's legacy of successfully completed projects is the best demonstration of our capabilities. We have a diverse portfolio which showcases our deep expertise and experience.

Griffith Base Hospital, NSW

HEALTH INFRASTRUCTURE NSW

ADCO is delivering the NSW Government's \$250 million Griffith Base Hospital Redevelopment in the Riverina region. Appointed principal contractor for the new Clinical Services Building, the development includes; an emergency department, maternity and paediatric services, operating theatres, surgical and medical inpatient units, medical imaging, and ambulatory and outpatient services including expanded renal and oncology services and specialist clinics.

ADCO is proud to be building this important health project for Health Infrastructure and Murrumbidgee Local Health District.

Type	Design & Construct
Value	\$250 million
Duration	38 months
Environmental Rating	Targeting 4 Star Green Star





Fremantle Hospital Mental Health Unit, WA

WA GOVERNMENT

The South Metropolitan Health Service Fremantle Hospital 40-Bed Mental Health Project is poised to significantly enhance mental health services in the south metropolitan area.

The project encompasses internal and external demolition works, the fit-out of an existing 3-level building, rooftop plant room and services reticulation, external courtyard works, landscaping, and new external pump room with associated tank works.

ADCO's commitment to mental health extends beyond construction projects; the Fremantle Hospital Mental Health Project aligns with ADCO's values, passion, and dedication to making a positive impact on mental health and well-being. We are proud to be selected as the Builder of Choice and will aim to exceed functional requirements and set new standards in healthcare facility developments.

Type	Managing Contractor
Value	\$49 million
Duration	13 months

Redland Hospital Expansion, QLD

HEALTH CAPITAL DIVISION (QUEENSLAND HEALTH)

ADCO were engaged under an Early Contractor Involvement (ECI) contract working closely with Health Capital Division (HCD) and Metro South to deliver a new design for Stage 1 of the Redland Hospital Expansion.

This consisted of establishing a new project brief that better suited the available funding, and ADCO worked alongside HCD to collaboratively develop a design that incorporated the requirements of the project brief whilst continually providing budget and program advice. ADCO presented the design at defined design milestones which included the identification and leadership of value management initiatives to manage the gap between cost and budget.

Towards the end of the ECI phase, ADCO was engaged to deliver an Early Works package consisting of preparing the site for the building. These works consisted of disconnecting services and demolishing a redundant Medical Records building established on site.

The conclusion of the ECI involved the delivery of a D&C lump sum tender to deliver the Main Works. The Main Works consists of constructing a new building delivering:

- A new 25 bed IPU ward (Inpatient Unit) which includes two isolation suites
- A new 12 bed ICU ward (Intensive Care Unit) which includes an isolation suite and a simulation room
- A link bridge connection from the existing Theatres to the ICU which requires close coordination with works being delivered by another project (providing part of this new link bridge)

HCD are very impressed with the ADCO team and the collaborative process delivered through the ECI and look forward to working with ADCO in the delivery of these works for early 2025.

The building also incorporates shell spaces for consulting rooms, medical imaging and additional wards and theatres.

Type	ECI to Design & Construct
Value	\$57 million
Duration	19 months



Tweed Valley Hospital Multi-storey Carpark and Health Hub, NSW

NSW HEALTH INFRASTRUCTURE

ADCO has completed the Tweed Valley Hospital's two 'Health Hub' buildings and multi-storey car park, to complement the main hospital building on the Tweed Valley Hospital site.

The Health Hub buildings are the home of the Bugalwena Aboriginal Health Service and include work areas and quiet rooms for staff, consultation rooms, a large meeting room and an outdoor courtyard. The clinical building houses Oral Health and the HIV and Related Programs service (HARP); whilst the LDR Health Hub provides a dedicated Learning, Development and Research facility, with an 84-seat lecture theatre, simulation and skills rooms, immersive learning & research spaces, a library and computer lab training.

ADCO also delivered the hospital's multi-deck car park offering around 1,100 car parking spaces over two basement levels and five levels above ground level, with the capacity to expand if needed.

ADCO is proud to have worked with NSW Health as part of the \$723.3 million Tweed Valley Hospital.

Type	Design & Construct
Value	\$43 million (total)
Duration	24 months



Prince Charles Hospital AETF, QLD

QUEENSLAND GOVERNMENT

ADCO was engaged by Queensland Health to construct the Adolescent Extended Treatment Facility (AETF) at Prince Charles Hospital. Renamed 'Jacaranda Place' by QLD Premier Annastacia Palaszczuk, the facility offers a 12-bed residential unit, a 20-place day program and integrated vocational and training programs.

All features have been meticulously configured and incorporated into the modern design to deliver the best possible healing environment for Jacaranda Place's residents.

The extension to the Prince Charles Hospital was made possible due to Queensland health's strategy that identified the need for a new treatment and rehabilitation centre for young people living with severe mental health issues.

The centre offers 12 bedrooms with built-in joinery and ensuites, nine internal courtyards, health facilities, classrooms and training spaces. The entire facility provides ample light and well-planted outdoor areas in each courtyard.

Type	Design & Construct
Value	\$26 million
Duration	13 months

“ADCO has vast experience building health facilities including hospitals, mental health clinics and aged care centres. I’m pleased that a firm of their calibre is in charge of building this facility.”

Steven Miles
QUEENSLAND MINISTER FOR
HEALTH AND AMBULANCE SERVICES





Bendigo Health Day Rehabilitation Centre

VICTORIAN HEALTH BUILDING AUTHORITY

The \$46 million Bendigo Health Day Rehabilitation Centre (BHDC) consolidates rehabilitation services into one new location that provides a holistic approach to deliver patient-centred care.

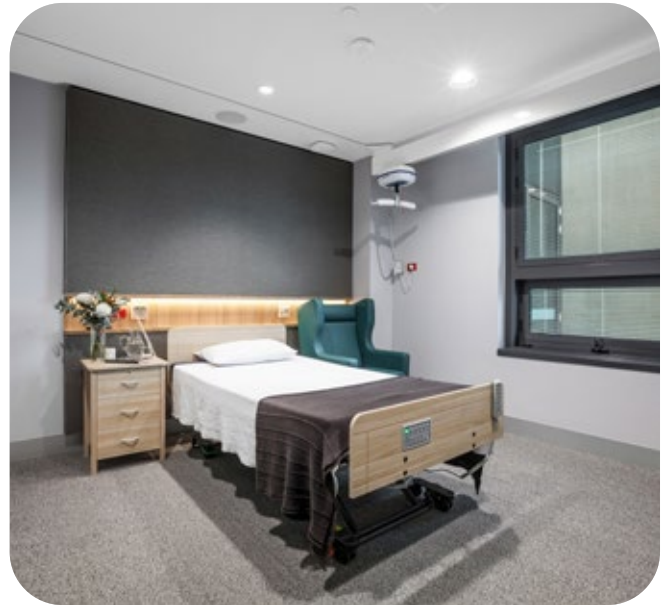
The works involved the demolition of the existing facilities and the redevelopment of the site, including tower buildings and the former hydrotherapy building in a new community green space at the heart of the hospital campus.

The redevelopment includes a new hydrotherapy pool and the bringing together of outpatient rehabilitation, allied health, dental, mental health, renal dialysis, breast screening and diabetes education services. This means patients recovering from accidents, injuries and medical conditions, such as a stroke or heart attack have access to a team of health professionals in one convenient place.

The project was delivered within a live operational hospital, with careful planning and management to minimise disruption.



Type	Construct Only
Value	\$46 million
Duration	25 months



Wantirna Aged Care Facility, VIC

VICTORIAN HEALTH BUILDING AUTHORITY

ADCO has delivered the \$80 million Wantirna Aged Care Facility for the Victorian Government in Melbourne's eastern suburbs.

Providing 120 beds in single-room accommodation, the complete facility provides residents with privacy, dignity and independence, and aims to maintain residents' physical and mental health with contemporary models of aged care, in addition to offering expansive views looking out to the Dandenong Ranges.

A 'pandemic mode' ventilation system was also developed for this important facility.

Type	Construct Only
Value	\$80 million
Duration	18 months



St Vincent's Private Hospital, VIC

ST VINCENT'S AGED AND HEALTH CARE SERVICES

ADCO's construction of St Vincent's Private Hospital, Werribee, and the adjacent 80-bed aged care facility brought a world-class, integrated health precinct to Victoria.

The complex project included a day procedure centre, four operating theatres, 32 acute medical/surgical/rehabilitation beds, 16 maternity birth suites and nursery, support areas, commercial kitchen, chapel, car parking, landscape and civil works.

The new state-of-the-art facility provides health services for up to 16,000 patients each year.

The building also incorporates shell spaces for consulting rooms, medical imaging and additional wards and theatres.

Type	Design & Construct
Value	\$75 million
Duration	21 months



Queensland Children’s Hospital, QLD

QUEENSLAND HEALTH

The Queensland Children’ Hospital (QCH) Inpatients Ward project encompassed a combination of one, two and four bed patient rooms, and a six-bed close observation patient room, the refurbishment of learning and office space to improve QCH medical training, along with a new library and study space for staff and students.

The finished space fit-out now provides additional capacity to Children’s Health Queensland (CHQ) at the hub of tertiary services for children and young people across Queensland.

ADCO was able to work closely with industry specialists to provide QCH with an alternate design approach which the consultants have adopted. This option is far less invasive to the hospital’s pathology building and far less disruptive to daily critical operations.

“Nicholas and the team’s adoption of our values and aspirations was critical to the success of the delivery of this piece in an operational hospital environment. ADCO has set the gold standard in terms of construction activity of this scale in the live environment within the public health sector.”

Graeme Smithers

QUEENSLAND HEALTH
SENIOR INFRASTRUCTURE PROJECT MANAGER,



Type	Construct Only
Value	\$12 million
Duration	7 months



San Parkway Clinic, NSW

SYDNEY ADVENTIST HOSPITAL

SAN Parkway Clinic provides three individual buildings interconnected by way of an impressive central atrium and elevated walkways. The buildings are a combination of three and four storeys and incorporate a high level of contemporary design aesthetic and the latest in environmental sustainability.

The clinic offers 248 car spaces across three levels of underground parking. SAN Parkway Clinic's co-location with Sydney Adventist Hospital together with the architectural excellence of the design has ensured that this facility is a notable address among medical and health professionals.

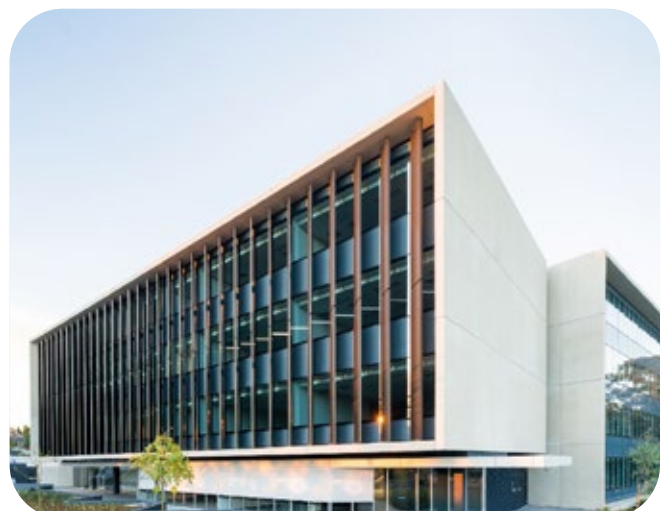
A notable aspect of the design is the precast, acid etched load-bearing panels of the façade which were not only selected for their structural capacity, but as an aesthetic feature, resulting in a smooth, sand-textured finish.

“We designed, tested and installed the first bal fz compliant curtain wall system in Australia. The new BAL FZ (Bushfire Attack Level Flame Zone) is the most extreme rating that can be applied to building design and construction.”

Sam Cavallaro

PROJECT MANAGER

Type	Design & Construct
Value	\$35 million
Duration	20 months





Bowral and District Hospital, NSW

HEALTH INFRASTRUCTURE NSW

Built for Health Infrastructure NSW, this \$67.5 million, four-storey hospital provides medical, mental health, maternity, paediatric and preoperative care for the local community. New facilities include wards, operating theatres, an emergency department, ambulance entry, car parking and improved pedestrian links across the site.

ADCO has a long-standing relationship with Health Infrastructure and relished the opportunity to mobilise a team to Bowral. Additionally, we have welcomed multiple employees to the ADCO family from the Bowral & District area for this and future projects, and have also successfully developed relationships with subcontractors based in the area allowing us to actively contribute to the local economy.



Type	Design & Construct
Value	\$67.5 million
Duration	17 months





Brookvale Community Health Centre, NSW

HEALTH INFRASTRUCTURE NSW

This high-profile project emphasises ADCO's innovative approach and outstanding reputation in health and government sectors.

The five-storey design integrates mental health, drug and alcohol services, multicultural, rehabilitation, aged care services and more. The scope of work also included a seven-storey car park accommodating 475 vehicles.

From inception to completion, BIM technology was used throughout to represent, integrate and fulfill the exacting design and construct delivery model and schedule.

Brookvale community health centre further extends ADCO's long and valued relationship with health infrastructure in NSW.



Type	Design & Construct
Value	\$50 million
Duration	16 months





Osborne Park Hospital, WA

WESTERN AUSTRALIAN GOVERNMENT

The Osborne Park Hospital Rehabilitation & Neonatal Nursery project includes a new neonatal nursery on level 2A, maternity assessment unit and a 16-bed rehabilitation unit. The enhanced obstetric services, which includes the nursery and maternity unit, will enable local mothers with low-to-moderate risk pregnancies to give birth closer to where they live.

The new 16-bed rehabilitation unit includes six existing stroke beds and 10 additional new beds, specialising in caring for patients aged over 65 years. Additionally, services include a new central therapy hub, new therapy garden and associated refurbishment works.

Osborne Park Hospital is the first of its kind for Perth's northern suburbs. The facility is home to a centralised therapy hub, providing inpatient and outpatient services to thousands of patients requiring rehabilitation in a contemporary environment.

Thanks to our extensive experience completing projects in and around live and operational environments, we were selected as the Builder of Choice.

Type	Construct Only
Value	\$17.5 million
Duration	16 months

Herston Private Hospital, QLD

WREN STREET HEALTH INVESTMENTS

ADCO's Queensland team proudly completed this important facet of Brisbane's Herston quarter health precinct for Wren Street Health Investments.

The 11-storey, private hospital and commercial development is built to house a day hospital and specialist medical suites over five levels, with car parking over seven storeys.

The day hospital provides three state-of-the-art theatres, a spacious, well-lit and modern foyer with adjacent cafe offers doctors, staff, patients and carers a space to wait for relatives, conduct meetings or take time out in their busy days. Patient care is vastly improved thanks to the dedicated upper-level carpark with direct access to specialist suites and the day hospital.

The project required complex logistical solutions, and medical practitioners were consulted in the design. Premium finishes were selected, resulting in a boutique, upmarket feel.

The façade is an architectural feature consisting of a series of aluminium hexagons with façade plantings which will soon grow out to provide greenery.

ADCO's team were highly commended by the client for their collective initiative, expertise and teamwork across the whole project.



Type	Design & Construct
Value	\$30 million
Duration	18 months





Newman Health Campus, WA

WA COUNTRY HEALTH SERVICE

ADCO's development for WA Country Health Service in the remote Pilbara region offers state-of-the-art health care facilities to Newman and surrounding areas.

The much-anticipated \$60m facility includes 12 in-patient beds, six emergency department bays, two dental chairs and GP consultation spaces, and dedicated rooms for outpatient consultation, therapy, medical imaging and pathology.

The hospital offers the latest in country healthcare and telehealth, and services such as physiotherapy, occupational therapy and mental health will be provided when stage 2 of the facility is complete in 2023.

The existing Newman Hospital remains operational during staged construction.

ADCO is pleased to work closely with local trades and has been delighted to engage with the community to lead social initiatives in Newman.

The Newman Health Campus Redevelopment is the 2024 MBA WA Winner for the Best Health Care Building \$50m - \$100m and a finalist for the Commonwealth Bank Best Regional Project Kimberley Pilbara.

Type	Construct Only
Value	\$60 million
Duration	24 months





Royal Perth Hospital ICU, WA

RAMSAY HEALTH CARE

ADCO was builder of choice for Intensive Care Unit (ICU) works at Royal Perth Hospital, as part of the \$20 million redevelopment of the central hospital's facilities.

The redevelopment now offers 24 single rooms, including one positive pressure room, four negative pressure rooms and two rooms equipped to accommodate bariatric patients.

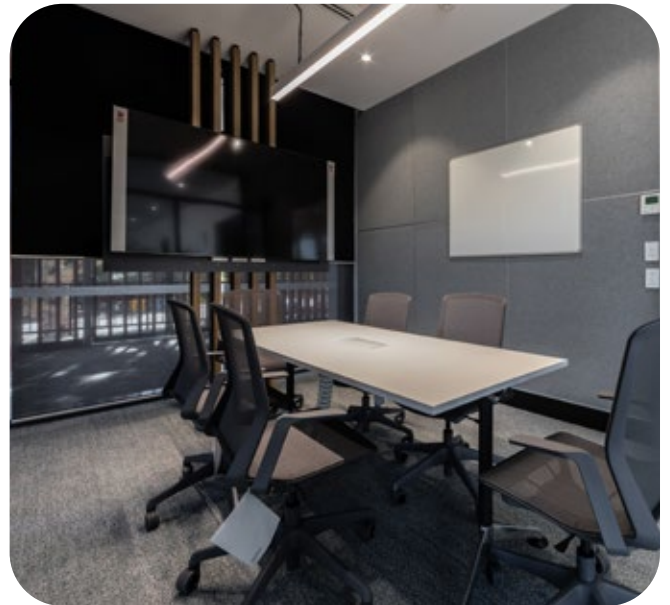
The unit has been developed to be optimised for COVID-19 conditions, including frequent air changes throughout the unit, separate rooms fitted with switch glass windows and a ventilation system that enables the safe accommodation of both COVID and non-COVID patients.

The new ICU accommodates a dedicated simulation training room where training exercises can be observed from behind a one-way mirror.

Well done to our team and project partners who together with The Department of Finance, East Metropolitan Health Service, Hunt Architects and consultant team fast-tracked the delivery of this project during the COVID-19 pandemic. WA Health Minister Amber-Jade Sanderson opened the completed project which commenced taking patients very soon after.



Type	Construction Management
Value	\$20 million
Duration	12 months



Kensington Temporary Laboratories, WA

DEPARTMENT OF PRIMARY INDUSTRIES AND REGIONAL DEVELOPMENT (DPIRD) WA

ADCO completed the Kensington Temporary Laboratories project for WA's Department of Primary Industries and Regional Development (DPIRD).

The project involved the development of a temporary laboratory building of 955m², containing Physical Containment PC2/BC2 laboratories and associated support services.

The facilities now offer three microbiology laboratory suites, a specimen processing laboratory suite, laboratory support facilities, sample receipt, wash up and sterilising amenities, external and internal storage solutions (materials and waste), common reception and staff amenities.

We were pleased to hand over the labs to our client, WA Department of Finance, who were very pleased with the result.

Type	Construction Management
Value	\$6 million
Duration	6 months

OTHER HEALTH PROJECTS



Greenslopes Hospital

RAMSAY HEALTH CARE

Type	ECI to Design & Construct
Value	\$35 million
Location	Greenslopes, QLD



Pindara Private Hospital

RAMSAY HEALTH CARE

Type	ECI to Design & Construct
Value	\$85 million
Location	Gold Coast, QLD



St George Hospital Stage 3

NSW HEALTH INFRASTRUCTURE

Type	Design & Construct
Value	\$26 million
Location	Sydney, NSW



Liverpool Health and Academic Precinct Multi-Storey Carpark

NSW HEALTH INFRASTRUCTURE

Type	Design & Construct
Value	\$33 million
Location	Liverpool, NSW



Royal Rehabilitation Centre Sydney

ROYAL REHABILITATION CENTRE


Type	ECI to Design & Construct
Value	\$52 million
Location	Sydney, NSW



Peninsula Private

RAMSAY HEALTH CARE

Type	ECI to Design & Construct
Value	\$60 million
Location	Frankston, VIC



“Project complexities and challenges were managed in a manner we have become accustomed to from the ADCO team. They acted in all times in a collaborative manner, proactively helping in the resolution of issues and often provided solutions to problems outside of their contractual responsibilities.”

Dean Clough
QLD DEVELOPMENT MANAGER
RAMSAY HEALTHCARE

A man in a white hard hat with 'ADCO' on it, safety glasses, and a high-visibility vest stands in profile, looking towards the right. A woman in a white hard hat with 'ADCO' on it, a blue shirt, and a high-visibility vest stands to his right, looking towards him. The background is a blurred construction site under a blue sky with clouds. A large white circular graphic is overlaid on the bottom left of the image.

OUR PEOPLE

**Our people are our point of difference.
They are ADCO.**

We are people who build.

ADCO recognises that our people, and everyone we work with all unite to form the core of our business. Our success and reputation have been achieved because of the abilities and expertise these people bring to our projects.



Judy Brinsmead AM

Chairman

Judy is Chairman of the Board and integral to the strategic management of ADCO. A solicitor and barrister, she holds a Bachelor of Laws with Honours and was previously a Partner at Morris Fletcher & Cross (now MinterEllison).

Judy brings a focused leadership style and over three decades of experience in Construction and Property, having joined ADCO as an Executive Director in 1989. She has a detailed understanding of the business and continues to be instrumental in ADCO's success and growth. Strong on community, Judy is also a member of the Board of Trustees of Bond University and was on the Joint Marketing Committee for the 2018 Commonwealth Games.



TOM HILL

Director

Tom commenced with ADCO in 2011. Holding a Bachelor of Business majoring in Management from Bond University, he is recognised as an integral part of ADCO, providing valuable leadership and guidance.

His focus is on providing strong connections between our clients, our people and ADCO's vision and values. Tom chairs the Brinsmead Hill Family Foundation which focuses on mental health, education and community support.

Tom is on the Australian Olympic and Paralympic Team Appeal Committee Queensland.



NATIONAL TEAM



Neil Harding

Managing Director

Neil has led ADCO since 2017 and has overseen a period of dynamic change and growth. With over 25 years of experience in the construction industry, Neil has held executive roles in Australia and internationally. He is a strong, strategic leader with a passion for building supportive, performance-driven cultures and developing meaningful industry-wide relationships.

He holds a Bachelor of Science with Honours (Sheffield Hallam University) and is a Fellow of the Royal Institution of Chartered Surveyors. Neil has a proven track record of driving change, delivering results and caring deeply about developing people and improving the industry for all who are part of it.



Gareth Adams

Chief Financial Officer

Gareth is a highly qualified financial professional with over 20 years of experience in the construction industry, including leadership roles in both Australia and the United Kingdom.

As Chief Financial Officer at ADCO, Gareth is responsible for the Group's IT, accounting, treasury and financial operations. His passion and diligence are underpinned by a Bachelor of Science (Economics) with Honours from the University of Bath and a Post Graduate Diploma in Finance and Strategy from University of Oxford.

Gareth is a Chartered Accountant (ACA) with The Institute of Chartered Accountants in England and Wales.



Cameron McBurnie

Chief Commercial Officer

Cameron has dual senior roles within ADCO, serving as Chief Commercial Officer in addition to being a Board Director. With a Construction and Property Development career spanning more than 25 years, he was previously a senior property lawyer at Deacons (now Norton Rose) and brings a direct and highly detail-oriented approach to ADCO's risk management and commercial processes.

Cameron is a Fellow of the Australian Institute of Company Directors and holds a Bachelor of Science (University of NSW) and a Bachelor of Laws with Honours (Queensland University of Technology).

NATIONAL TEAM



Sean Conroy

Chief Risk Officer

Sean has more than 25 years of experience in the construction industry, and has been part of the ADCO team since 1997.

With formal training in both Quantity Surveying and Law, he excels at resolving complex practical, legal and financial challenges faced by our team and clients across all stages of the project development process. He holds a string of high-level qualifications including graduating with a Bachelor of Laws (UNSW) with the prestigious University Medal.



Shanelle Woodall

Head of Corporate Affairs

Shanelle brings 20 years of industry experience to her role as Head of Corporate Affairs. With a multi-faceted background in legal and commercial roles in the UK, US and Australia, she values the roles and responsibilities of all who contribute to construction projects – including employees, trade partners, clients and external stakeholders.

Shanelle studied law at QUT and is a graduate of the Australian Institute of Company Directors and the inaugural ADCO Leaders Program. She is passionate about supporting women, both within ADCO and the wider industry, and is an executive board member ‘Women of ADCO’ and committee member of the National Association of Women in Construction (QLD).



Ross Trethewey

Head of Health Safety Environment

Ross is an industry specialist in Health, Safety and Environmental (HSE) management. With more than 25 years of experience, he holds a Bachelor of Building with First Class Honours/ University Medal (UNSW) and a PHD in OHS Performance Measurement (UNSW).

Ross brings highly specialised skills in conversion and the delivery of complex projects, legal and expert opinion, and high-risk work methodologies. He is also a passionate advocate for increased focus on upstream design and planning to reduce downstream risks in project delivery through integrated risk management outcomes. Ross is a member of the Federal Safety Commissioner Industry Reference Group and represents ADCO within the Master Builders Association.



Nick Hamilton

Head of Conversion

Nick brings over 15 years of experience in the construction industry, with deep insights into the Australian construction landscape and a strong understanding of the importance of stakeholder relationships.

His expertise spans multiple sectors, including Tier 1 delivery projects, where his hands-on approach and ability to meet strict deadlines have consistently driven exceptional project and client outcomes. Nick’s professionalism and industry knowledge in tendering and project delivery have been key to the success of our business.

Nick graduated from the ADCO Leaders Program in 2024 and has held various roles, including Project Manager and Construction Manager. For the past five years, Nick has served as the QLD State Pre-Construction Manager at ADCO.

“ADCO recognises that our people, and everyone we work with, all unite to form the core of our business”

Neil Harding
MANAGING DIRECTOR

STATE MANAGERS



Kristian Anthony

NSW State Manager

Kristian joined ADCO in 2010 as a cadet and has since progressed to the role of NSW State Manager. His career trajectory includes key positions as Senior Project Manager and State Pre-Construction Manager, where he applied his skills and expertise.

An enthusiastic and astute leader, Kristian excels in developing high-performance teams that consistently exceed the expectations of clients and stakeholders.

Throughout his tenure at ADCO, he has earned a strong reputation for delivering outstanding results and building long-lasting relationships with key project stakeholders. Kristian holds a Bachelor of Engineering (Civil) from the University of New South Wales and is a graduate of both Australian Institute of Company Directors and the inaugural ADCO Leaders Program.



James Prattent

QLD State Manager

James now leads our Queensland team after having previously built our Western Australian operations into one of the leaders of the construction industry over a 5-year period.

He has over 20 years' experience in both contractor and client roles, working extensively across multiple sectors, successfully delivering projects in metropolitan and regional areas.

James has a strong track record of understanding client needs and market trends, bringing high professional standards and strong leadership to teams he guides. His exceptional communication and people skills continue to be key to ADCO being the Builder of Choice.

James holds a Bachelor of Science in Construction Management and Economics, having graduated from Curtin University and is a registered builder and graduate of the Australian Institute of Company Directors.



Lyn O'Brien

WA State Manager

Lyn leads our Western Australian operations with over 15 years of experience across both pre-construction and management roles.

With hands on experience spanning domestic and international markets, together with broad reaching industry relationships, she is focused on providing high-quality levels of delivery and building long-lasting client relationships. Lyn's collaborative leadership style ensures we consistently deliver responsive outcomes that are structured to the unique requirements of every client project.

Lyn is a National Director of NAWIC and was awarded the 2022 LHQ Outstanding Leadership Award for Women in Construction. She holds a Bachelor of Construction Economics and Masters in Quantity Surveying.



Andrew Staedler

VIC State Manager

Andrew is an accomplished property and construction professional with proven experience in construction management, new business development and regional business unit leadership. Bringing 25 years' worth of knowledge and strategy gathered from the successful delivery of major projects in Victoria. His expertise is underpinned by a Bachelor of Planning Design (Property and Construction) and a Bachelor of Property and Construction (Honours), with University of Melbourne.

Andrew takes pride in developing expert teams capable of delivering outstanding quality projects and maintains a strong focus on leadership, creativity and genuine collaboration matched by equal focus on diligent execution and outcome certainty.

FINANCIAL STRENGTH

Financial security is one of the most critical elements to consider when appointing a construction partner.

ADCO provides financial surety for our clients and their financiers. We maintain a policy of profit reinvestment and working capital management to ensure our balance sheet remains commensurate with the size of our business. ADCO exceeds the financial requirements for licensing in each state and territory, for private and government projects.

We have strong cash and liquid asset reserves and a blue-chip client base, which translate into consistent cash flow and profitability. Our audited financial statements are available on request.



OUR COMMITMENTS



Diversity and Inclusion

ADCO celebrates and embraces diversity. We want our workplaces to reflect the communities and clients we serve – and be places where everyone is treated equitably, fairly and with respect.



Community Engagement

Community has been central to the ADCO story for over 50 years. We continue to engage actively with charities, community groups and like-minded businesses to create positive impacts cross Australia.



Environmental, Social and Governance

We commit to the integration of our environment social and governance (ESG) framework across our business undertakings.



Women of ADCO

ADCO is a leader in elevating the status and influence of women in Australia's construction industry.



Reconciliation Action Plan

We are committed to a construction industry that builds more meaningful relationships, opportunities and outcomes for Aboriginal and Torres Strait Islander peoples.



Novus

Innovation isn't optional. Our future success depends on it.

We have an in-house group of innovation champions, NOVUS, established in 2019.



Modern Slavery

We recognise our responsibility as part of a global supply chain.



ADCO Balance

Empowering ADCO's workforce to thrive through balance, fostering a culture of well-being and excellence.

ACCREDITATIONS, CERTIFICATIONS & MEMBERSHIPS



Safety Management

Our safety management system is independently certified to AS45001 (Occupational Health and Safety Management Systems)



Environmental Management

Ensuring compliance with legislative requirements and industry practices, this system is certified to ISO 14001:2018 (Environmental Management Systems).



Quality Management

ADCO's quality management system complies to AS/NZS ISO 9001:2015 and has third party endorsement through NCS.



Information Management System

Our information security management system is independently certified by third party auditors as compliant with ISO/IEC 27001:2022 (Information Security Management).



Federal Safety Accreditation

ADCO complies with the Australian Government's National Code of Practice for the Construction Industry and is accredited with the Office of the Federal Safety Commissioner.



Green Buildings

ADCO has been a proud member of the Green Building Council of Australia since 2006 and we continue to be committed to the success and increased adoption of sustainable construction practices.



Master Builders Association

As a Master Builders Association Member, ADCO is a trusted organisation of a community of builders who meet regularly at a local and national level.



Diversity Council Australia

ADCO is committed to providing an inclusive and diverse workplace where employees and others in the workplace are treated equitably, fairly and with respect.



Supply Nation

ADCO is committed to increasing Indigenous Participation in our projects both through direct employment and procurement of goods and services.



Noongar Indigenous Chamber of Commerce and Industry

ADCO is a proud partner with the Noongar Indigenous Chamber of Commerce and Industry which support Aboriginal owned businesses and the broader Western Australia business community.



Kinaway Chamber of Commerce

ADCO proudly partners with Kinaway Chamber of Commerce, which is a leading Victorian organisation dedicated to supporting Victorian Aboriginal and Torres Strait Islander business owners.



Kari Foundation

ADCO has a long-standing partnership with the Kari Foundation, which works with the Community to create meaningful points of connection to share Aboriginal culture and achievement.



Best Managed Companies

ADCO was acknowledged as one of Australia's Best Managed Companies for 2 years running in 2022 and 2021.

The Best Managed Company program identifies and celebrates privately-owned and managed companies across Australia that set the highest standards of business performance, and shines a light on the power of private business as a key driver of Australia's economy.



The National Association of Women in Construction

ADCO is a proud member of the National Association of Women in Construction (NAWIC), which is an organisation led by a team of passionate volunteers who all strive to help champion and empower women in the construction and related industries to reach their full potential.

ADCO shares NAWIC's vision of an equitable construction industry where women fully participate within all facets of the construction industry. ADCO's mission is to increase our female employment rate to 30% by 2030.



Large Format Retail Association

ADCO is a longstanding member of the Large Format Retail Association (LFRA), Australia's peak industry association for the Large Format Retail sector.

Sydney

Address

Level 2, 7-9 West Street,
North Sydney, NSW 2060

Postal

PO Box 1982, North Sydney,
NSW 2059

Email

Sydney@adcoconstruct.com.au

Reception

(02) 8437 5000

Gold Coast

Address

Level 5, 7 Bay Street,
Southport, QLD 4215

Postal

PO Box 10393, Southport BC,
QLD 4215

Email

Southport@adcoconstruct.com.au

Reception

(07) 5577 0900

Melbourne

Address

Level 9, 75 Dorcas Street,
South Melbourne, VIC 3205

Email

Melbourne@adcoconstruct.com.au

Reception

(03) 9832 1400

Brisbane

Address

23 Graham Street,
Milton, QLD 4064

Postal

PO Box 1167, Milton,
QLD 4064

Email

Brisbane@adcoconstruct.com.au

Reception

(07) 3511 5555

Perth

Address

Level 5, 12 The Esplanade,
Perth, WA 6000

Email

Perth@adcoconstruct.com.au

Reception

(08) 9211 0900



ADCO

adcoconstruct.com.au