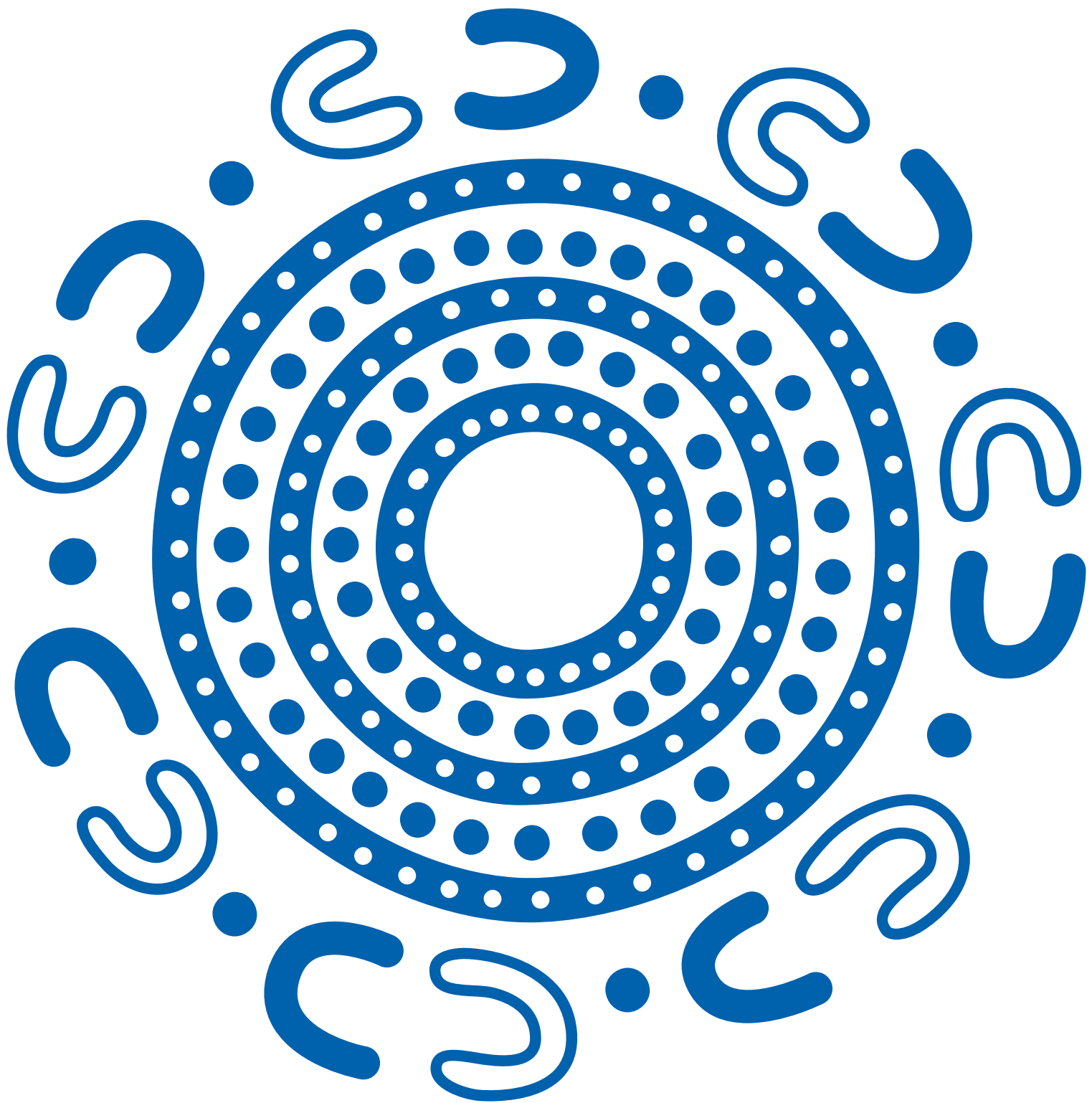


# CAPABILITY STATEMENT

Short-Term  
Accommodation





**We acknowledge the Traditional Custodians  
of the land and pay our respects to their  
Elders past and present.**

**Artwork by Jason King.**

Jason is a proud Gumbaynggirr man, born in Murwillumbah, and raised in nearby Tumbulgam, in Northern New South Wales.

# CONTENTS

04

People who build

06

Expertise and reach

Safer by Choice

08

Our short-term accommodation credentials

11

Our short-term accommodation clients

12

Our work

32

Our people

National team  
State Managers

38

Financial strength

40

Accreditations, certifications & memberships



Time

8	:	0	0	
8	:	2	5	

# PEOPLE WHO BUILD

Since our beginnings in 1972, ADCO has been steered by family values, trust and honesty. Everything we do is underpinned by our core values of responsibility, dynamism and teamwork.



# WHO WE ARE

**We are people who build. It's been that way for more than half a century and today we are one of Australia's largest construction businesses. Proudly, we continue to be family owned.**

## Our story

A force in Australian construction – guided by family values, trust and putting people first.

The ADCO story began back in 1972. In the years since then, we've grown to be a multi-billion-dollar construction business guided by an unwavering commitment to quality, our clients, and our people. These foundations have seen us become one of the top private companies in Australia with a blue-chip client list and an award-winning portfolio of almost 4,000 successfully completed buildings from early work packages to \$300+ million projects.

## Builder of Choice

ADCO aspires to be the *Builder of Choice* for our clients, our consultants, our trade partners, and our people.

Becoming the *Builder of Choice* doesn't just happen. It takes responsibility, teamwork and a dynamic mindset. It's about delivering on our promises and bringing energy to every stage of every project to achieve shared goals. It means completing projects on time, on budget and to the highest standards possible. We call this the ADCO Way, and it's embedded in our DNA. It's the way *People who Build* go to work.

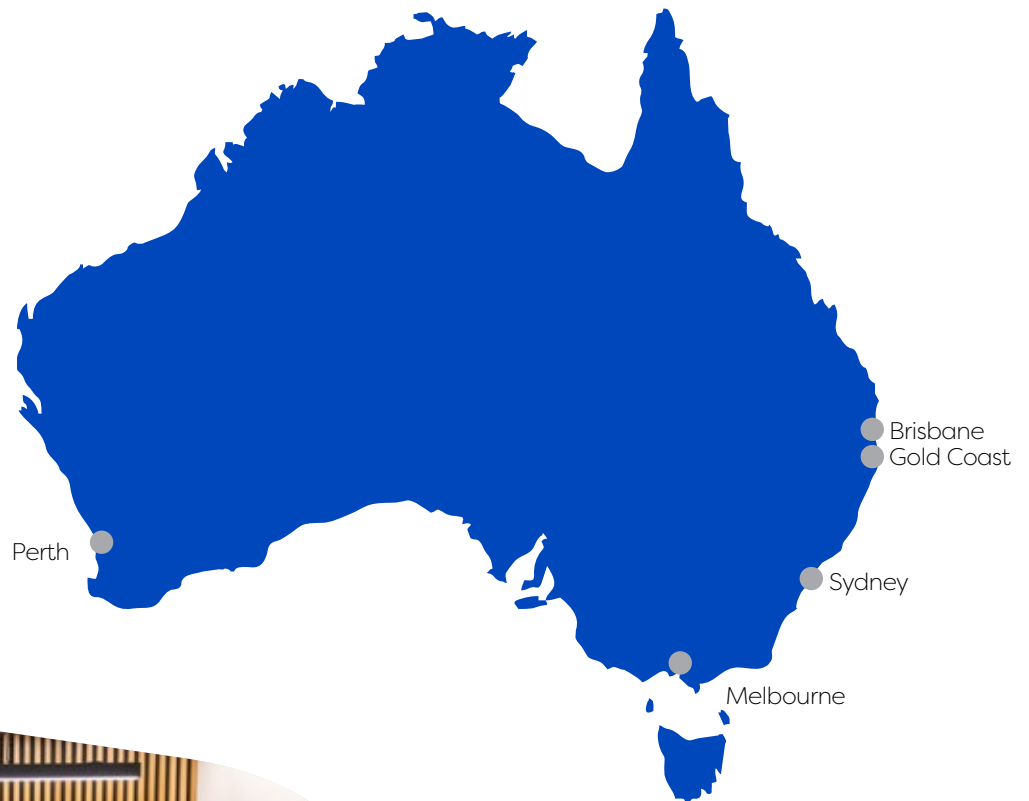


# EXPERTISE AND REACH

## ADCO has a true national presence with offices throughout Australia.

ADCO is an industry leader with an operational footprint that touches every corner of the Australian market. The strength of our award-winning expertise, capability and people is reflected by exceptionally high levels of repeat business and long-established client relationships across key private and institutional corporations, as well as all levels of government.

Each year, our projects are delivered via early contractor involvement, design, and construct, managing contractor, and traditional construction methods of procurement. Our national presence ensures we can offer holistic and seamlessly delivered projects up to \$300+ million anywhere in Australia.



● ADCO Office Locations



# *Safer* by **CHOICE**

## **It is our commitment to always ask 'is there a safer choice?'**

Safer by Choice is a philosophy that targets a genuine attitude change towards safety. Running deep within the ADCO business, it goes far beyond statistics and actively promotes personal responsibility and careful decision making.

Underpinned by three commitment pillars of action of Taking Responsibility; Supporting Each Other and Focusing on Positives, Safer by Choice recognises that everyone involved in the design and delivery of a project is a decision maker, and we all have the ability to improve safety, for ourselves and others, by choice.

Establishing a successful safety culture is a long-term commitment from all ADCO employees, guided, fostered and preserved by the leadership team.

ADCO was awarded the 'Office of the Federal Safety Commissioner's National Excellence in Workplace Health and Safety' award for our work on Lakelands Station project at the Master Builder's Awards in November 2022.



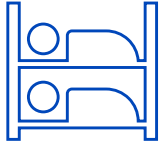
We are people  
who build  
outstanding  
places to stay.

---

Sheraton Mirage Port Douglas QLD

# OUR SHORT-TERM ACCOMMODATION CREDENTIALS





**2600+**

student accommodation beds



**3000+**

hotel beds



**95+**

short-term accommodation projects delivered



Sheraton Mirage Port Douglas QLD

**ADCO has been delivering major hotel, hospitality, and student accommodation projects for over 50 years across metropolitan and regional locations.**

Our portfolio includes new greenfield developments, extensions to existing facilities, internal fit-outs, asset repositioning and detailed redevelopments within fully operational environments. Today the bulk of our projects are delivered via design and construct and early contractor involvement contracts.



Parmelia Hilton, WA

**“The ADCO team consistently delivered construction services with a high level of expertise, integrity & professionalism through all phases of the Project. Of particular note was ADCO’s attention to detail and their collaborative approach to working in an operating environment. Their experience with hotel construction greatly improved the project outcome for all parties.”**

**Matthew Tripolone**  
IHG

# OUR SHORT-TERM ACCOMMODATION CLIENTS

We are proud to have built places to sleep for some of the largest universities, hotel chains and housing services in the country. Testament to our success is our significant repeat clientele. Our short term accommodation clients include:





# OUR WORK

**ADCO's legacy of successfully completed projects is the best demonstration of our capabilities. We have a truly diverse portfolio which showcases our expertise and experience.**



## Common Ground, WA

### DEPARTMENT OF COMMUNITIES

The WA Housing Authority, operating within the Department of Communities is progressing the delivery of the “Common Ground facility” in Perth as part of the “All Paths Lead to a Home”, Western Australia’s 10-Year Strategy on Homelessness 2020-2030.

Common Ground is an evidence-based model of permanent, supportive housing where people who have experienced chronic homelessness and/or rough sleeping are housed and supported, alongside low-income earners, in a purpose-built residence, and on-site, wrap-around services are provided to individuals who need them.

These services include case management support and may also include support for physical and mental illnesses, support for substance abuse, links to education, training and employment opportunities.

ADCO has been selected as the Builder of Choice on the project which involves the construction of 29 studio and 83 one-bedroom apartments with self-contained kitchens and bathrooms.

Other features include secure landscaped podium with shared BBQ areas, shade structure and seating areas, communal dining, lounge and kitchen spaces, leasable commercial spaces for the provision of on-site medical services, café and community services. Office spaces and meeting rooms for Community Housing providers and operators and vehicle parking will also be provided.

Type	<b>Construct Only</b>
Value	<b>\$70 million</b>
Duration	<b>20 months</b>



## Melbourne Place, VIC

### LONGRIVER

ADCO is pleased to be the builder of choice for the construction of a boutique hotel in Melbourne's CBD.

The \$75 million project involves the demolition of the three existing buildings and the design and construction of a two-level basement and a fourteen level hotel on Russell Street.

When complete, the 189-room boutique development will offer multiple different spaces including three retail tenancies, a signature restaurant space at basement level, a ground and rooftop bar on Level 11, a multi-purpose space for events and functions, a gymnasium and back-of-house operational areas such as offices, change rooms, end-of-trip facilities, luggage storage, laundry and housekeeping rooms, and storage.

ADCO is pleased to be working with our Client to provide Melbourne with a beautiful new building that responds to its urban setting.

---

<b>Type</b>	<b>Design &amp; Construct</b>
<b>Value</b>	<b>\$75 million</b>
<b>Duration</b>	<b>18 months</b>



## Arklife Cordelia, QLD

### ARKLIFE

ADCO has commenced construction on our developer Arklife’s second development, a 29-storey, build-to-rent project in South Brisbane. The build-to-rent concept provides tenants with a more cost-effective and stylish way to live in the inner suburbs of Brisbane.

The heritage listed development will encompass 265 residential units and deliver residents a high-end lifestyle incorporating an indoor gym, roof top pool, barbecue and dining area, lounge area, a private cinema and associated landscaping.

The development will also refurbish and showcase a beautiful heritage-listed building, highlighting its architecture and incorporating it into the complete design, using it for commercial and retail use. There will also be space for a bar in the ground floor heritage building. Additionally, 314 car spaces and 347 bicycle spaces will be available for residents and guests across six basement levels.




---

Type	<b>ECI to Design &amp; Construct</b>
Value	<b>\$125 million</b>
Duration	<b>38 months</b>
Environmental Rating	<b>Targeting 5 Star (GBCA)</b>



## Kaggarabah, QLD

### QLD GOVERNMENT DEPARTMENT OF ENERGY & PUBLIC WORKS

ADCO is proud to have been the builder of choice for the revitalisation of Kaggarabah (formerly known as the Joyce Wilding Hostel); a centre that has provided refuge for vulnerable women and children in Queensland for over half a century.

The development adds seven two-storey blocks to the existing site, with four apartments in each, set in a shared, landscaped surrounding. An integrated communal hub provides space for essential support services and communal interactions, with another five apartments located above.

Sheltered BBQ facilities, a yarning circle, a kids' play area, a community garden and a parking area are also part of the facilities ADCO's team are completing. The centre is designed so visitors filter through the hub before they are officially granted access to the short-term accommodation area.

The facility benefits the local community significantly by continuing to aid vulnerable women and children as they seek assistance from domestic violence.

Kaggarabah Housing Project – Community Service Facilities is the 2024 Master Builders Queensland – Brisbane Housing and Construction Awards Winner.



<b>Type</b>	<b>Construct Only</b>
<b>Value</b>	<b>\$20 million</b>
<b>Duration</b>	<b>12 months</b>





## SwanCare Aged Care, WA

### SWANCARE

ADCO was named Builder of Choice for SwanCare’s \$30 million development. The project comprised of the construction of a new, 120-bedroom aged care facility located on the Bentley Park campus at 1-3 Allen Court, approximately 10kms from Perth CBD.

As part of the redevelopment of their existing 1,000 resident Bentley Park campus, SwanCare’s new aged care facility provides a new standard in aged care living. This industry-leading \$30m complex delivers modern living spaces and integrated centralised services over 4 storeys, allowing SwanCare to also service their wider precinct while offering the best quality of life for their residents.

The project also includes a new basement visitor parking space and a separate delivery area together with external works, hard and soft landscaping and a new cafe facility linked to the existing building.

This industry-leading \$30 million complex delivers modern living spaces and integrated centralised services over four storeys.

The project also includes a new basement visitor parking space and a separate delivery area together with external works, hard and soft landscaping and a new cafe facility linked to the existing building.



<b>Type</b>	<b>Design &amp; Construct</b>
<b>Value</b>	<b>\$30 million</b>
<b>Duration</b>	<b>12 months</b>



## RUAH Centre, WA

### RUAH COMMUNITY SERVICES

ADCO is proud to have delivered a purpose built centre for women and children escaping family violence for Ruah Community Services in Northbridge Perth.

The first of its kind, the \$27 million Ruah Centre for Women and Children is a seven-storey development providing accommodation and support services for women and children as they recover from domestic violence, assisting them in building a new future for themselves.

The facility includes 3 floors dedicated to women’s health and family empowerment services, 2 floors with support services and 2 floors of short-term accommodation.

Considered a centre of excellence the building will also facilitate research and collaboration to help end family violence.

“ADCO’s proposal and a very thorough due diligence process had demonstrated the Australian company’s strong track record in the delivery of similar projects and a strong alignment with RUAH values.”

**DEBRA ZANELLA**

CHIEF EXECUTIVE OFFICER  
RUAH COMMUNITY SERVICES

Type	Design & Construct
Value	\$27 million
Duration	15 months

## Ozanam House, VIC

### VINCENTCARE

Since 1953 Ozanam House has provided supported accommodation to single men over the age of 18 experiencing homelessness or housing crisis in inner Melbourne areas.

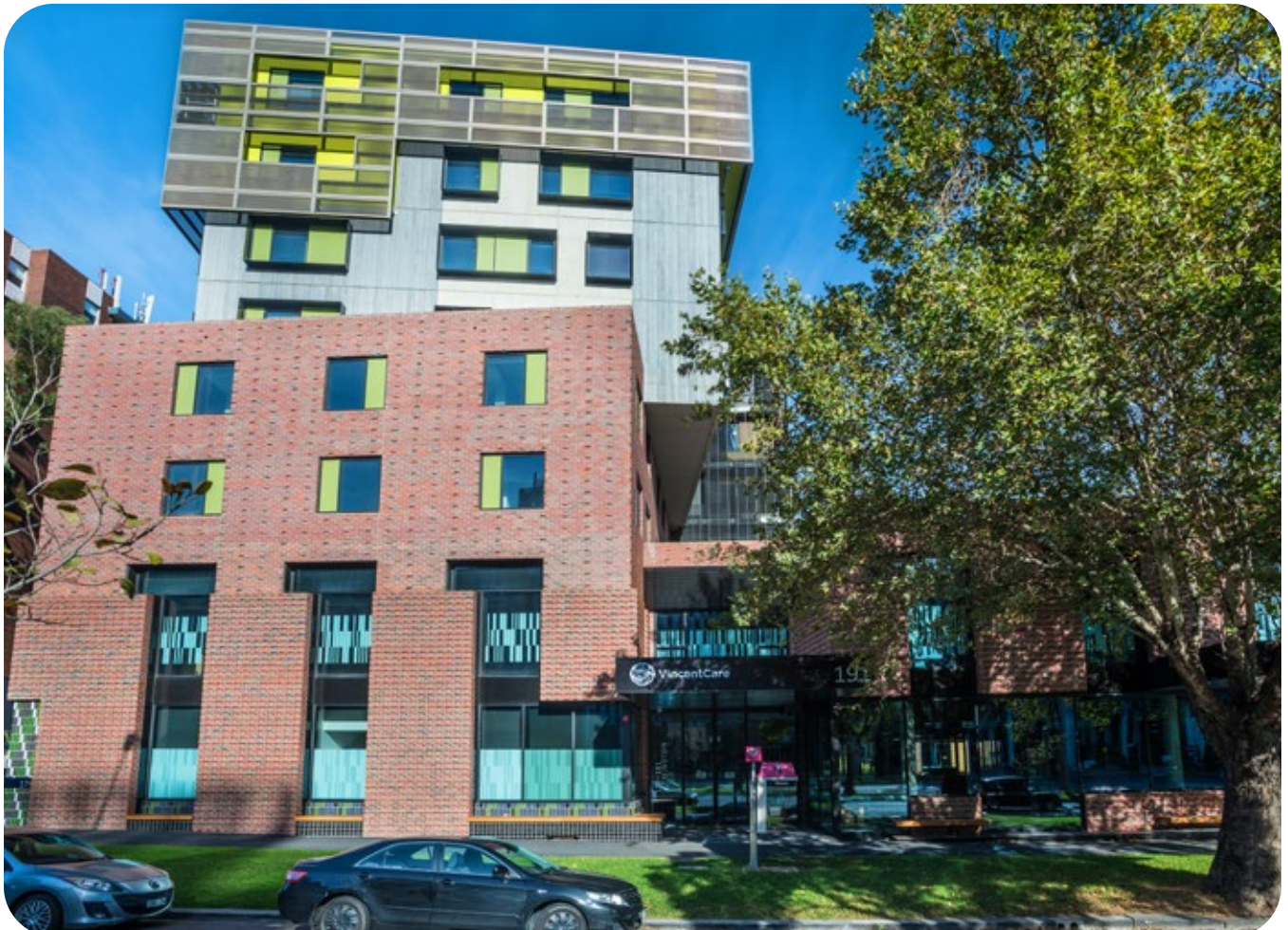
ADCO's involvement on the \$40 million project included the demolition of two existing buildings and the construction of the new Ozanam House.

ADCO was delighted to have delivered the unique, North Melbourne short-term accommodation facility for VincentCare. Ozanam House offers 134 rooms across 10 storeys, a medical clinic with dental care services, gym, café and a learning and tech hub with free wifi and cloud storage.

Currently Ozanam House is the largest homeless facility in Australia.



**Type** Construct Only  
**Value** \$40 million  
**Duration** 16 months





## Deakin University Burwood Student Accommodation, VIC

### DEAKIN UNIVERSITY

ADCO’s team completed the \$66 million student accommodation for Deakin University on their Burwood campus. The development provides 512 beds in a combination of two, four and six-bedroom apartments within three buildings, up to thirteen levels high.

The project features the latest in communal facilities for students, including a central common area with lounge, kitchen and dining zones, dedicated study rooms, laundrette facilities, open-plan recreation space with flexible furniture and a games area, landscaped outdoor entertainment area with BBQ, seating and lights, and rooftop solar panels.

The \$66 million student accommodation project integrates two, four and six bedroom apartments within three buildings over 13 levels. The existing administration area was also refurbished to enhance student services.

Construction was delivered over two stages – the first stage involved the concurrent delivery of wings one and two and the second stage delivered wing three.

<b>Type</b>	<b>Construct Only</b>
<b>Value</b>	<b>\$66 million</b>
<b>Duration</b>	<b>12 months</b>
<b>Environmental Rating</b>	<b>5 Star Green Star Certified Building (GBCA)</b>

## Holiday Inn Express, NSW

### PRO-INVEST GROUP

Holiday Inn Express (HIEX) Mascot is a mid-priced hotel chain within the InterContinental Hotels Group family of brands.

The \$55 million project spans nine levels (including one basement level) offering a total of 247 keys and 98 parking spaces available at basement, ground and first floor levels.

The surrounding area is heavily loaded with hotel and commercial buildings, due to proximity to Sydney's Kingsford Smith Airport.

Construction included prefabricated façade and load-bearing structural panels (precast concrete) and bathroom pods, to accelerate program durations to meet the program timeline.

This project marks ADCO's second Holiday Inn Express build, after resounding success constructing the first in Adelaide several years ago.



---

<b>Type</b>	<b>ECI to Design &amp; Construct</b>
<b>Value</b>	<b>\$55 million</b>
<b>Duration</b>	<b>18 months</b>





## Parmelia Hilton Refurbishment, WA

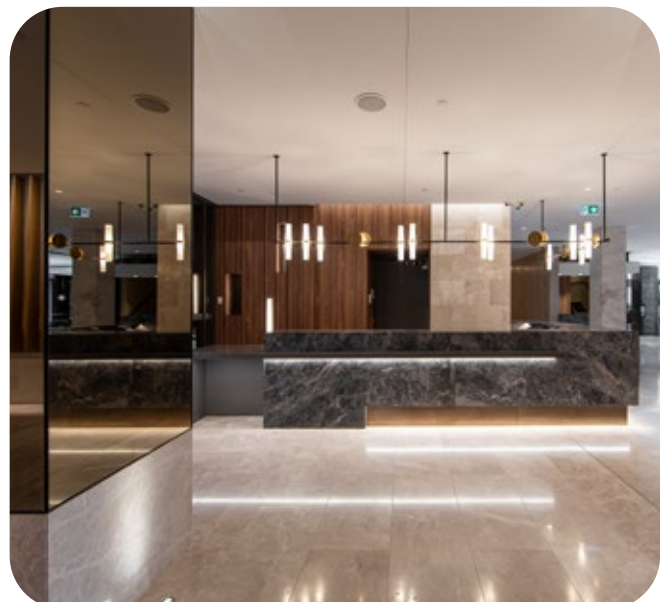
### HAWAIIAN GROUP

Property group Hawaiian and hotel giant Hilton confirmed ADCO as Builder of Choice to undertake the \$42 million refurbishment of Perth CBD's Parmelia Hilton.

Designed to enhance guest experience, the project will include a revitalised exterior and lobby, modernised guestrooms, the addition of an executive lounge and a proposed connection to the neighbouring Brookfield Place precinct. Guestrooms were significantly renovated, including new bathrooms, air-conditioning upgrades, new flooring & furniture and improved in-room technology. The room count will also increase from 284 to 309 rooms and suites.

ADCO has considered the requirements of carrying out a major refurbishment in a live, operational hotel and undertook the work in seven stages. By sequencing the works in this way, maximum construction efficiency was achieved while also retaining a huge benefit to the end users and the hotel operator with the hotel floors being ready for occupancy at an expedited rate throughout the project.

Guestrooms were significantly renovated, including new bathrooms, air-conditioning upgrades, new flooring & furniture and improved in-room technology.



Type	<b>Construct Only</b>
Value	<b>\$42 million</b>
Duration	<b>12 months</b>



## Bella Vista Gardens, NSW

### CRANBROOK CARE

ADCO was the design and construct contractor of this award-winning, purpose-built aged care facility at Kellyville in Sydney's north-west. The \$100 million project included a large-scale residential aged care facility catering for low, high and dementia care, and delivery of 55 Independent Living Units across three additional buildings.

Aesthetically, each one, two and three-bedroom apartment has been afforded high ceilings, floor-to-ceiling windows and living spaces boasting full-width oak timber flooring, quality Calcutta-style benchtops, custom designed kitchen joinery and top-of-the-range appliances. Designer bathrooms showcase high-quality fittings, with custom built joinery, Caesar-stone vanity tops, state-of-the-art stone tiles and walk-in showers.

ADCO took home two Master Builders Association awards for this project: the NSW award for 'Aged Care Buildings over \$50 Million', and the National award for 'Lifestyle Housing for Seniors'.

The project represents the third major development ADCO has completed for boutique aged care operator Cranbrook Care.

The aged care buildings display sophisticated design elements and high-end finishes, selected by renowned architects Architectus and interior designers Pike Withers.



Type  
Value  
Duration

Design & Construct  
\$100 million  
21 months





## James Cook University Student Accommodation, QLD

### JAMES COOK UNIVERSITY

ADCO delivered the design and construction of the student accommodation precinct for James Cook University (JCU) in Cairns.

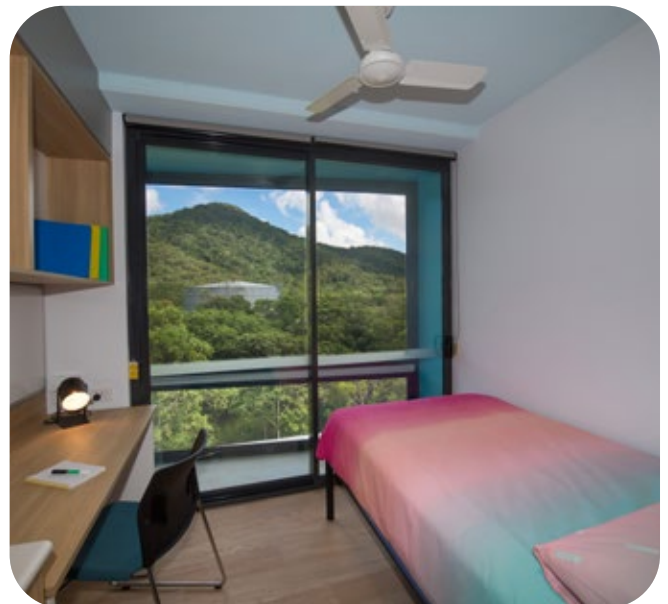
JCU required a residential development which delivered a student experience, active living, quiet study/sleeping spaces, as well as meeting the design requirements for living in the tropics.

The Cairns development was a greenfield site, with design allowing for future expansion. The building provides 300 beds across seven storeys.

Twenty-five percent of the rooms are single occupancy apartments, with the remaining dwellings designed as six-bedroom communal living spaces, which include a shared lounge, kitchen, dining room, and bathrooms.

The ground floor internal landscape will be open to the public, with 24-hour accessibility. The student-exclusive recreation areas on other floors include communal lounges, study areas, a gymnasium, music rooms and roof terraces.

**The sub-tropical design includes environmentally sustainable design principles, including large overhangs, shading, and screening devices to provide privacy as well as façade aesthetic, and mosquito deterrent.**



<b>Type</b>	<b>ECI to Design &amp; Construct</b>
<b>Value</b>	<b>\$35 million</b>
<b>Duration</b>	<b>16 months</b>



## Victoria University Student Accommodation, VIC

### VICTORIA UNIVERSITY

ADCO constructed the \$50 million development as part of the Footscray University Town collaboration with Maribyrnong City Council. The partnership focuses on delivering a diverse, vibrant and creative arts precinct in the Footscray area.

The 12-level student accommodation project now provides 508 beds in a combination of self-contained private studios and two or six-bed apartments. Residents are able to make use of a theatre with state-of-the-art audio and visual systems and sound proofing, a gymnasium, bike shed, games room, launderette and study areas.

The facility also features an outdoor courtyard complete with roof terrace with BBQ area, a café, convenience store, electronic swipe cards security systems to all rooms and the latest in CCTV camera surveillance.

The two and six-bed apartments have shared bathrooms, a kitchen, dining and lounge areas and individual bedrooms. ADCO's works included the fit-out of all apartments with essentials such as bed, desk, pinboards, table, TV, hydronic heaters, fans, bathroom, wardrobe, shelving and kitchen with oven, microwave, stove and fridge. The high-quality interior finish was designed and constructed with an appreciation for 'whole of life' expectations.

With over 300 kitchens and bathrooms installed, flat pack pods were fully assembled off-site and factory-certified before being fitted to each separate apartment.

The multiple bed apartments have shared bathrooms, a kitchen, dining and lounge areas complementing individual bedrooms.



---

<b>Type</b>	<b>Design &amp; Construct</b>
<b>Value</b>	<b>\$50 million</b>
<b>Duration</b>	<b>17 months</b>





## Holiday Inn Express Adelaide, SA

### PRO-INVEST GROUP

The \$40 million Holiday Inn Express (HIEX) project involved the demolition of three existing buildings followed by the design and construction of a 245-room hotel, in the north-west quarter of Adelaide’s city centre.

The hotel spans 10 levels, accommodating guests on levels 2 to 9, with retail tenancies on level 1 and ground.

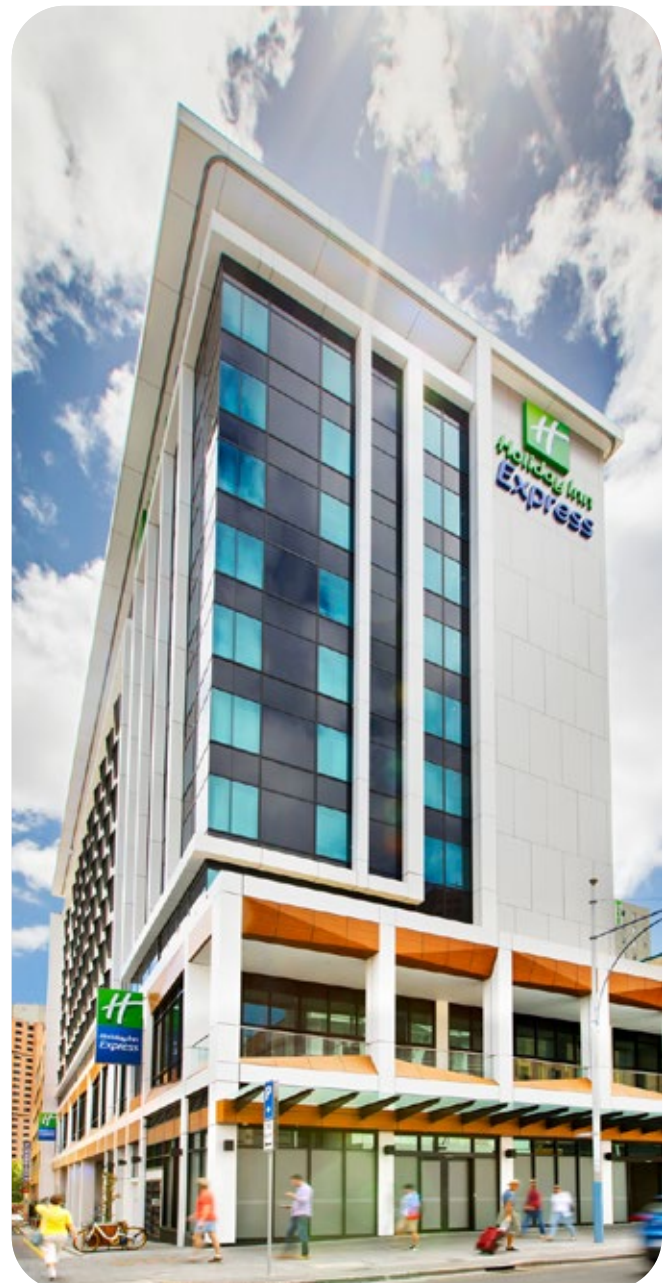
Construction works also included the fit-out of guest rooms, back-of-house and front-of-house facilities, public spaces, meeting room, bar and a carpark on the ground floor.

Constructed over 10 storeys, the hotel hosts guests on level 2 upwards, with retail on the ground floor and level 1. The works also included the fit out of guest rooms, back-of-house and front-of-house facilities, a bar, a car park and more.

**“We are thrilled with the outcome on HiEx Adelaide, and I thank ADCO for their commitment to achieving these outcomes. I really like their approach, they respect the client and they are trying to achieve what we want. I look forward to working with them again in the near future.”**

**TIM SHERLOCK**  
PRO-INVEST  
MANAGING DIRECTOR

<b>Type</b>	<b>Design &amp; Construct</b>
<b>Value</b>	<b>\$40 million</b>
<b>Duration</b>	<b>15 months</b>





## Caritas Christi, VIC

### ST VINCENTS AGED AND HEALTH CARE SERVICES

ADCO was awarded the design and construct contract to redevelop the existing Caritas Christi Hospice in Melbourne’s eastern suburbs, creating the Caritas Christi Hospice and St Vincent’s Care Services, Kew.

Redevelopment included demolition of the existing hospital and subsequent construction of a new 26-bed palliative care hospice and 122-room/135-bed residential aged care facility, with several shared use and back-of-house areas such as car parking, kitchen and loading facilities.

Now finished, the aged care facility also offers a chapel, function room, administrative areas and support services for both facilities.

The palliative care hospice also provides administration areas for palliative care staff and meeting rooms for the Order of Malta. Other allied services areas also remain for artists in residence and day respite services.

---

Type	<b>Design &amp; Construct</b>
Value	<b>\$55 million</b>
Duration	<b>17 months</b>

## Unilodge Student Accommodation, QLD

### UNILODGE

ADCO delivered the design and construction of the major student accommodation development for UniLodge in the Brisbane CBD.

The \$100 million project includes a combination of single and shared room accommodation, with 870 beds, delivered over 16 levels.

ADCO managed the design and approvals process in an early contractor involvement (ECI) capacity, with the works designed to provide students with high-quality affordable housing within a collegiate lifestyle.

To enhance the student experience, the ground level includes residential common space with associated outdoor recreation areas and ancillary retail. Additional facilities within the building include a gymnasium, music and study rooms, a theatre, laundry facilities and courtyard gardens.

The building security is designed in accordance with 'crime prevention through environmental design' principles. This includes active access control and surveillance systems to ensure safety of residents and visitors.

---

<b>Type</b>	<b>ECI to Design &amp; Construct</b>
<b>Value</b>	<b>\$100 million</b>
<b>Duration</b>	<b>18 months</b>



# OTHER SHORT-TERM ACCOMMODATION PROJECTS



## Scape Student Accommodation

SCAPE AUSTRALIA

Type	Design & Construct
Value	\$6 million
Location	Surry Hills, NSW



## Sheraton Mirage Port Douglas

FULLSHARE GROUP

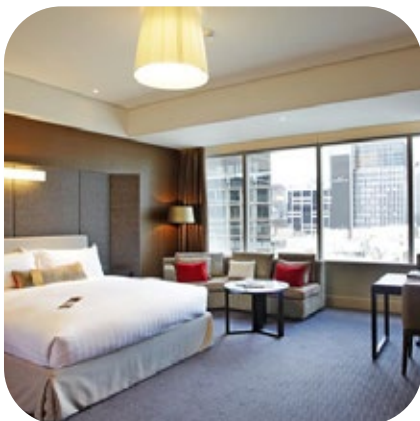
Type	Construct Only
Value	\$30 million
Location	Port Douglas, QLD



## Sheraton Resort Noosa

SUNCORP

Type	Construction Management
Value	\$2.5 million
Location	Noosa, QLD



## RACV City Club Boutique Accommodation

RACV CITY CLUB

Type	Construct Only
Value	\$15 million
Location	Melbourne, VIC



## Royal Rehabilitation Centre Sydney

ROYAL REHABILITATION

Type	ECI / Design & Construct
Value	\$115 million
Location	Sydney, NSW



## Wantirna Residential Aged Care

VICTORIAN HEALTH AND HUMAN SERVICES BUILDING AUTHORITY

Type	Construct Only
Value	\$56 million
Location	Wantirna, VIC





**“ADCO proved time and time again that they bring enthusiasm, commitment and attention to detail to their projects.”**

**Andrew Hogg**  
SAVILLS

A man in a white hard hat with the ADCO logo, safety glasses, and a high-visibility vest stands in profile, looking towards the right. A woman in a white hard hat with the ADCO logo, a blue shirt, and a high-visibility vest stands to his right, looking towards him. The background is a blurred construction site with a blue sky and some trees. A large white circular graphic is overlaid on the lower left side of the image.

# OUR PEOPLE

**Our people are our point of difference.  
They are ADCO.**

**We are people who build.**

**ADCO recognises that our people, and everyone we work with all unite to form the core of our business. Our success and reputation have been achieved because of the abilities and expertise these people bring to our projects.**





# Judy Brinsmead AM

## Chairman

---

Judy is Chairman of the Board and integral to the strategic management of ADCO. A solicitor and barrister, she holds a Bachelor of Laws with Honours and was previously a Partner at Morris Fletcher & Cross (now MinterEllison).

Judy brings a focused leadership style and over three decades of experience in Construction and Property, having joined ADCO as an Executive Director in 1989. She has a detailed understanding of the business and continues to be instrumental in ADCO's success and growth. Strong on community, Judy is also a member of the Board of Trustees of Bond University and was on the Joint Marketing Committee for the 2018 Commonwealth Games.



# TOM HILL

## Director

---

Tom commenced with ADCO in 2011. Holding a Bachelor of Business majoring in Management from Bond University, he is recognised as an integral part of ADCO, providing valuable leadership and guidance.

His focus is on providing strong connections between our clients, our people and ADCO's vision and values. Tom chairs the Brinsmead Hill Family Foundation which focuses on mental health, education and community support.

Tom is on the Australian Olympic and Paralympic Team Appeal Committee Queensland.



# NATIONAL TEAM



**Neil Harding**

**Managing Director**

Neil has led ADCO since 2017 and has overseen a period of dynamic change and growth. With over 25 years of experience in the construction industry, Neil has held executive roles in Australia and internationally. He is a strong, strategic leader with a passion for building supportive, performance-driven cultures and developing meaningful industry-wide relationships.

He holds a Bachelor of Science with Honours (Sheffield Hallam University) and is a Fellow of the Royal Institution of Chartered Surveyors. Neil has a proven track record of driving change, delivering results and caring deeply about developing people and improving the industry for all who are part of it.



**Gareth Adams**

**Chief Financial Officer**

Gareth is a highly qualified financial professional with over 20 years of experience in the construction industry, including leadership roles in both Australia and the United Kingdom.

As Chief Financial Officer at ADCO, Gareth is responsible for the Group's IT, accounting, treasury and financial operations. His passion and diligence are underpinned by a Bachelor of Science (Economics) with Honours from the University of Bath and a Post Graduate Diploma in Finance and Strategy from University of Oxford.

Gareth is a Chartered Accountant (ACA) with The Institute of Chartered Accountants in England and Wales.



**Cameron McBurnie**

**Chief Commercial Officer**

Cameron has dual senior roles within ADCO, serving as Chief Commercial Officer in addition to being a Board Director. With a Construction and Property Development career spanning more than 25 years, he was previously a senior property lawyer at Deacons (now Norton Rose) and brings a direct and highly detail-oriented approach to ADCO's risk management and commercial processes.

Cameron is a Fellow of the Australian Institute of Company Directors and holds a Bachelor of Science (University of NSW) and a Bachelor of Laws with Honours (Queensland University of Technology).

## NATIONAL TEAM



### Sean Conroy

#### Chief Risk Officer

Sean has more than 25 years of experience in the construction industry, and has been part of the ADCO team since 1997.

With formal training in both Quantity Surveying and Law, he excels at resolving complex practical, legal and financial challenges faced by our team and clients across all stages of the project development process. He holds a string of high-level qualifications including graduating with a Bachelor of Laws (UNSW) with the prestigious University Medal.



### Shanelle Woodall

#### Head of Corporate Affairs

Shanelle brings 20 years of industry experience to her role as Head of Corporate Affairs. With a multi-faceted background in legal and commercial roles in the UK, US and Australia, she values the roles and responsibilities of all who contribute to construction projects – including employees, trade partners, clients and external stakeholders.

Shanelle studied law at QUT and is a graduate of the Australian Institute of Company Directors and the inaugural ADCO Leaders Program. She is passionate about supporting women, both within ADCO and the wider industry, and is an executive board member 'Women of ADCO' and committee member of the National Association of Women in Construction (QLD).



### Ross Trethewey

#### Head of Health Safety Environment

Ross is an industry specialist in Health, Safety and Environmental (HSE) management. With more than 25 years of experience, he holds a Bachelor of Building with First Class Honours/ University Medal (UNSW) and a PHD in OHS Performance Measurement (UNSW).

Ross brings highly specialised skills in conversion and the delivery of complex projects, legal and expert opinion, and high-risk work methodologies. He is also a passionate advocate for increased focus on upstream design and planning to reduce downstream risks in project delivery through integrated risk management outcomes. Ross is a member of the Federal Safety Commissioner Industry Reference Group and represents ADCO within the Master Builders Association.



### Nick Hamilton

#### Head of Conversion

Nick brings over 15 years of experience in the construction industry, with deep insights into the Australian construction landscape and a strong understanding of the importance of stakeholder relationships.

His expertise spans multiple sectors, including Tier 1 delivery projects, where his hands-on approach and ability to meet strict deadlines have consistently driven exceptional project and client outcomes. Nick's professionalism and industry knowledge in tendering and project delivery have been key to the success of our business.

Nick graduated from the ADCO Leaders Program in 2024 and has held various roles, including Project Manager and Construction Manager. For the past five years, Nick has served as the QLD State Pre-Construction Manager at ADCO.

**“ADCO recognises that our people, and everyone we work with, all unite to form the core of our business”**

**Neil Harding**  
MANAGING DIRECTOR

# STATE MANAGERS



## Kristian Anthony

### NSW State Manager

Kristian joined ADCO in 2010 as a cadet and has since progressed to the role of NSW State Manager. His career trajectory includes key positions as Senior Project Manager and State Pre-Construction Manager, where he applied his skills and expertise.

An enthusiastic and astute leader, Kristian excels in developing high-performance teams that consistently exceed the expectations of clients and stakeholders.

Throughout his tenure at ADCO, he has earned a strong reputation for delivering outstanding results and building long-lasting relationships with key project stakeholders. Kristian holds a Bachelor of Engineering (Civil) from the University of New South Wales and is a graduate of both Australian Institute of Company Directors and the inaugural ADCO Leaders Program.



## James Prattent

### QLD State Manager

James now leads our Queensland team after having previously built our Western Australian operations into one of the leaders of the construction industry over a 5-year period.

He has over 20 years' experience in both contractor and client roles, working extensively across multiple sectors, successfully delivering projects in metropolitan and regional areas.

James has a strong track record of understanding client needs and market trends, bringing high professional standards and strong leadership to teams he guides. His exceptional communication and people skills continue to be key to ADCO being the Builder of Choice.

James holds a Bachelor of Science in Construction Management and Economics, having graduated from Curtin University and is a registered builder and graduate of the Australian Institute of Company Directors.



## Lyn O'Brien

### WA State Manager

Lyn leads our Western Australian operations with over 15 years of experience across both pre-construction and management roles.

With hands on experience spanning domestic and international markets, together with broad reaching industry relationships, she is focused on providing high-quality levels of delivery and building long-lasting client relationships. Lyn's collaborative leadership style ensures we consistently deliver responsive outcomes that are structured to the unique requirements of every client project.

Lyn is a National Director of NAWIC and was awarded the 2022 LHQ Outstanding Leadership Award for Women in Construction. She holds a Bachelor of Construction Economics and Masters in Quantity Surveying.



## Andrew Staedler

### VIC State Manager

Andrew is an accomplished property and construction professional with proven experience in construction management, new business development and regional business unit leadership. Bringing 25 years' worth of knowledge and strategy gathered from the successful delivery of major projects in Victoria. His expertise is underpinned by a Bachelor of Planning Design (Property and Construction) and a Bachelor of Property and Construction (Honours), with University of Melbourne.

Andrew takes pride in developing expert teams capable of delivering outstanding quality projects and maintains a strong focus on leadership, creativity and genuine collaboration matched by equal focus on diligent execution and outcome certainty.

# FINANCIAL STRENGTH

**Financial security is one of the most critical elements to consider when appointing a construction partner.**

---

ADCO provides financial surety for our clients and their financiers. We maintain a policy of profit reinvestment and working capital management to ensure our balance sheet remains commensurate with the size of our business. ADCO exceeds the financial requirements for licensing in each state and territory, for private and government projects.

We have strong cash and liquid asset reserves and a blue-chip client base, which translate into consistent cash flow and profitability. Our audited financial statements are available on request.



# OUR COMMITMENTS



## Diversity and Inclusion

ADCO celebrates and embraces diversity. We want our workplaces to reflect the communities and clients we serve – and be places where everyone is treated equitably, fairly and with respect.



## Community Engagement

Community has been central to the ADCO story for over 50 years. We continue to engage actively with charities, community groups and like-minded businesses to create positive impacts cross Australia.



## Environmental, Social and Governance

We commit to the integration of our environment social and governance (ESG) framework across our business undertakings.



## Women of ADCO

ADCO is a leader in elevating the status and influence of women in Australia's construction industry.



## Reconciliation Action Plan

We are committed to a construction industry that builds more meaningful relationships, opportunities and outcomes for Aboriginal and Torres Strait Islander peoples.



## Novus

Innovation isn't optional. Our future success depends on it.

We have an in-house group of innovation champions, NOVUS, established in 2019.



## Modern Slavery

We recognise our responsibility as part of a global supply chain.



## ADCO Balance

Empowering ADCO's workforce to thrive through balance, fostering a culture of well-being and excellence.

# ACCREDITATIONS, CERTIFICATIONS & MEMBERSHIPS



## Safety Management

Our safety management system is independently certified to AS45001 (Occupational Health and Safety Management Systems)



## Environmental Management

Ensuring compliance with legislative requirements and industry practices, this system is certified to ISO 14001:2018 (Environmental Management Systems).



## Quality Management

ADCO's quality management system complies to AS/NZS ISO 9001:2015 and has third party endorsement through NCS.



## Information Management System

Our information security management system is independently certified by third party auditors as compliant with ISO/IEC 27001:2022 (Information Security Management).



## Federal Safety Accreditation

ADCO complies with the Australian Government's National Code of Practice for the Construction Industry and is accredited with the Office of the Federal Safety Commissioner.



## Green Buildings

ADCO has been a proud member of the Green Building Council of Australia since 2006 and we continue to be committed to the success and increased adoption of sustainable construction practices.



## Master Builders Association

As a Master Builders Association Member, ADCO is a trusted organisation of a community of builders who meet regularly at a local and national level.



## Diversity Council Australia

ADCO is committed to providing an inclusive and diverse workplace where employees and others in the workplace are treated equitably, fairly and with respect.



## Supply Nation

ADCO is committed to increasing Indigenous Participation in our projects both through direct employment and procurement of goods and services.





### Noongar Indigenous Chamber of Commerce and Industry

ADCO is a proud partner with the Noongar Indigenous Chamber of Commerce and Industry which support Aboriginal owned businesses and the broader Western Australia business community.



### Kinaway Chamber of Commerce

ADCO proudly partners with Kinaway Chamber of Commerce, which is a leading Victorian organisation dedicated to supporting Victorian Aboriginal and Torres Strait Islander business owners.



### Kari Foundation

ADCO has a long-standing partnership with the Kari Foundation, which works with the Community to create meaningful points of connection to share Aboriginal culture and achievement.



### Best Managed Companies

ADCO was acknowledged as one of Australia's Best Managed Companies for 2 years running in 2022 and 2021.

The Best Managed Company program identifies and celebrates privately-owned and managed companies across Australia that set the highest standards of business performance, and shines a light on the power of private business as a key driver of Australia's economy.



### The National Association of Women in Construction

ADCO is a proud member of the National Association of Women in Construction (NAWIC), which is an organisation led by a team of passionate volunteers who all strive to help champion and empower women in the construction and related industries to reach their full potential.

ADCO shares NAWIC's vision of an equitable construction industry where women fully participate within all facets of the construction industry. ADCO's mission is to increase our female employment rate to 30% by 2030.



### Large Format Retail Association

ADCO is a longstanding member of the Large Format Retail Association (LFRA), Australia's peak industry association for the Large Format Retail sector.

## Sydney

---

**Address**

Level 2, 7-9 West Street,  
North Sydney, NSW 2060

**Postal**

PO Box 1982, North Sydney,  
NSW 2059

**Email**

[Sydney@adcoconstruct.com.au](mailto:Sydney@adcoconstruct.com.au)

**Reception**

(02) 8437 5000

## Gold Coast

---

**Address**

Level 5, 7 Bay Street,  
Southport, QLD 4215

**Postal**

PO Box 10393, Southport BC,  
QLD 4215

**Email**

[Southport@adcoconstruct.com.au](mailto:Southport@adcoconstruct.com.au)

**Reception**

(07) 5577 0900

## Melbourne

---

**Address**

Level 9, 75 Dorcas Street,  
South Melbourne, VIC 3205

**Email**

[Melbourne@adcoconstruct.com.au](mailto:Melbourne@adcoconstruct.com.au)

**Reception**

(03) 9832 1400

## Brisbane

---

**Address**

23 Graham Street,  
Milton, QLD 4064

**Postal**

PO Box 1167, Milton,  
QLD 4064

**Email**

[Brisbane@adcoconstruct.com.au](mailto:Brisbane@adcoconstruct.com.au)

**Reception**

(07) 3511 5555

## Perth

---

**Address**

Level 5, 12 The Esplanade,  
Perth, WA 6000

**Email**

[Perth@adcoconstruct.com.au](mailto:Perth@adcoconstruct.com.au)

**Reception**

(08) 9211 0900



# ADCO

[adcoconstruct.com.au](http://adcoconstruct.com.au)